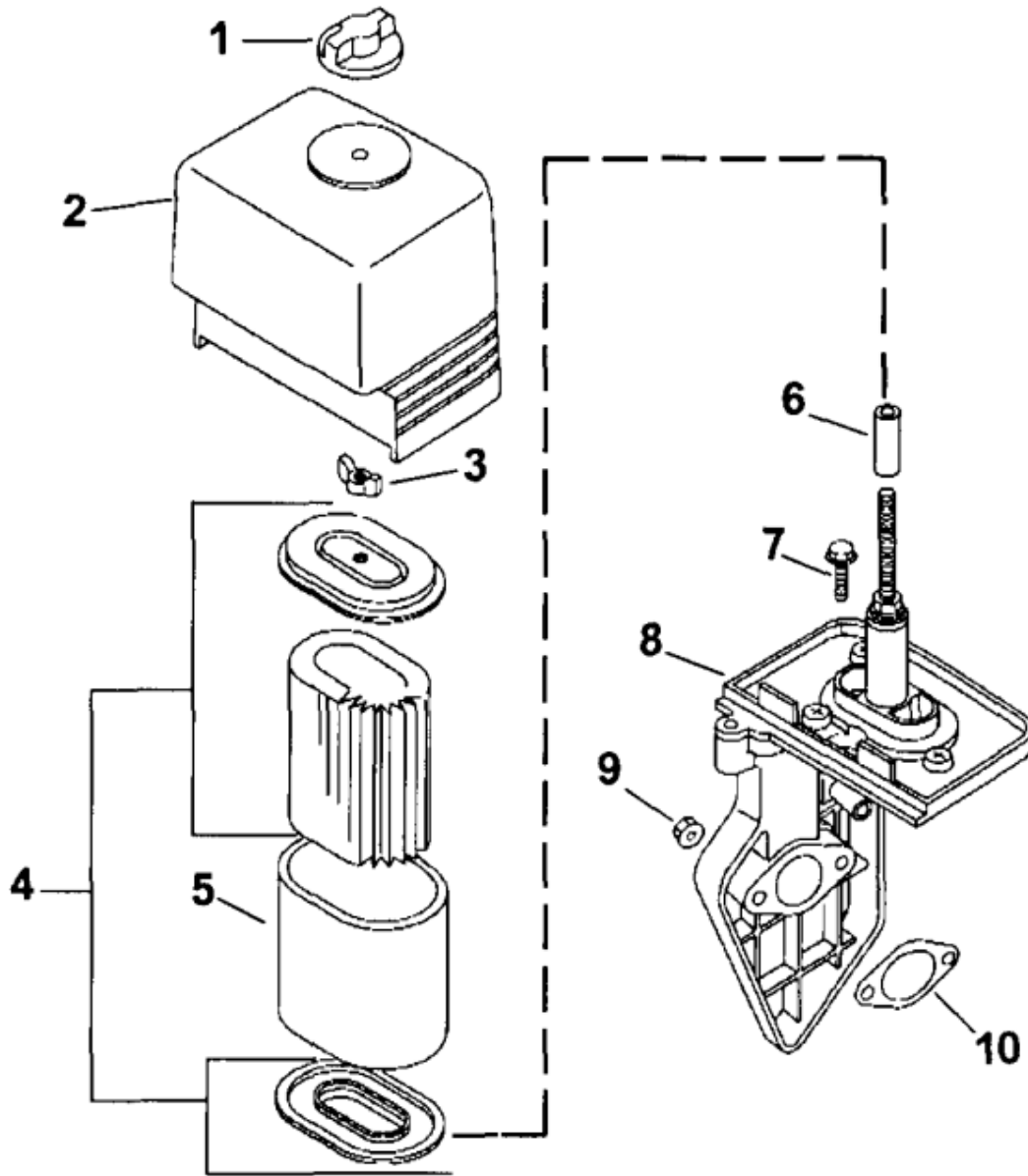


KOHLER.ENGINES

COMMAND PRO CS

CS 6T – 6 HP

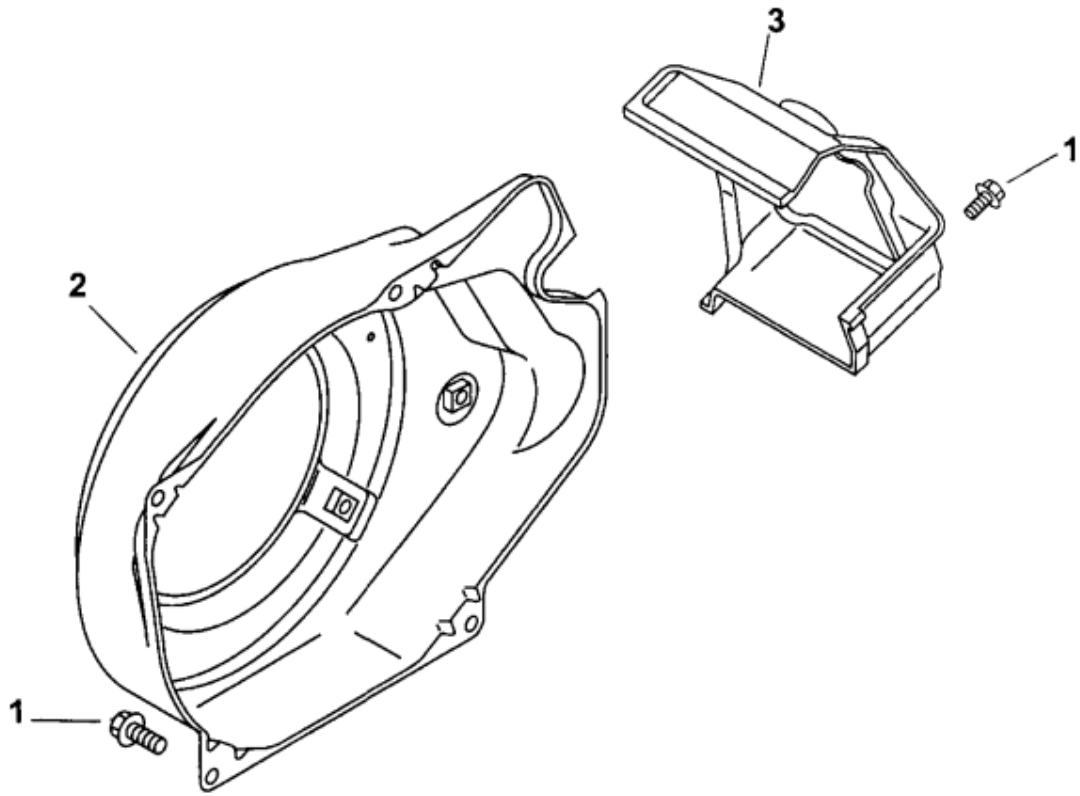




Air intake/Filtration 10-7-3

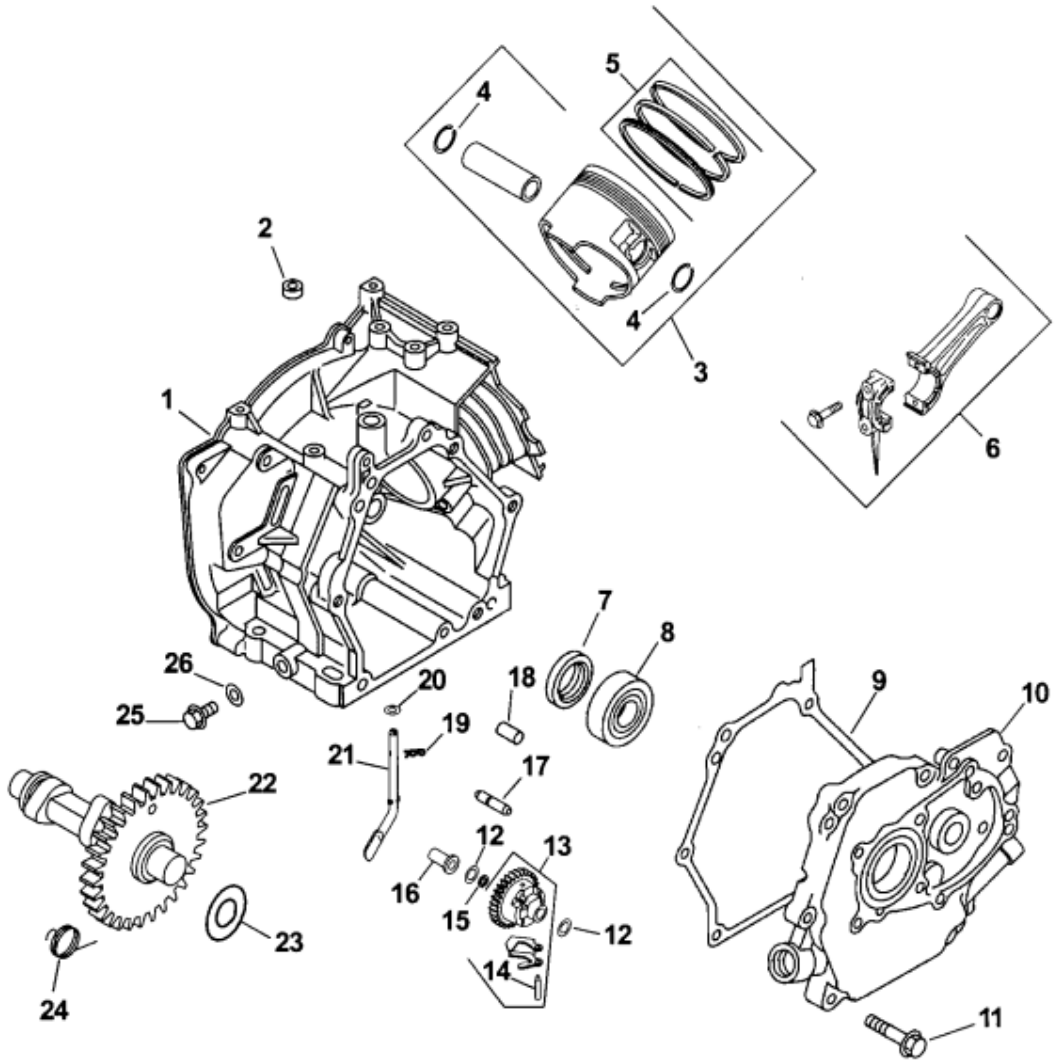
Ref #	Part	Description	Qty
1	63 100 19-S	NUT	1
2	63 096 05-S	COVER,A/C	1
3	63 100 06-S	NUT, WING A/C	1
4	63 083 03-S	ELEMENT	1
5	63 083 04-S	PRECLEANER, ELEMENT	1
6	63 032 12-S	A/C SEAL	1
7	63 086 20-S	SCREW	1
8	63 094 02-S	A/C BASE	1
9	63 100 15-S	NUT A/C	2
10	63 041 20-S	GASKET A/C	1
	63 113 03-S	DECAL, A/C Not Illustrated	1

BlowerHousing&Baffles



BlowerHousing&Baffles

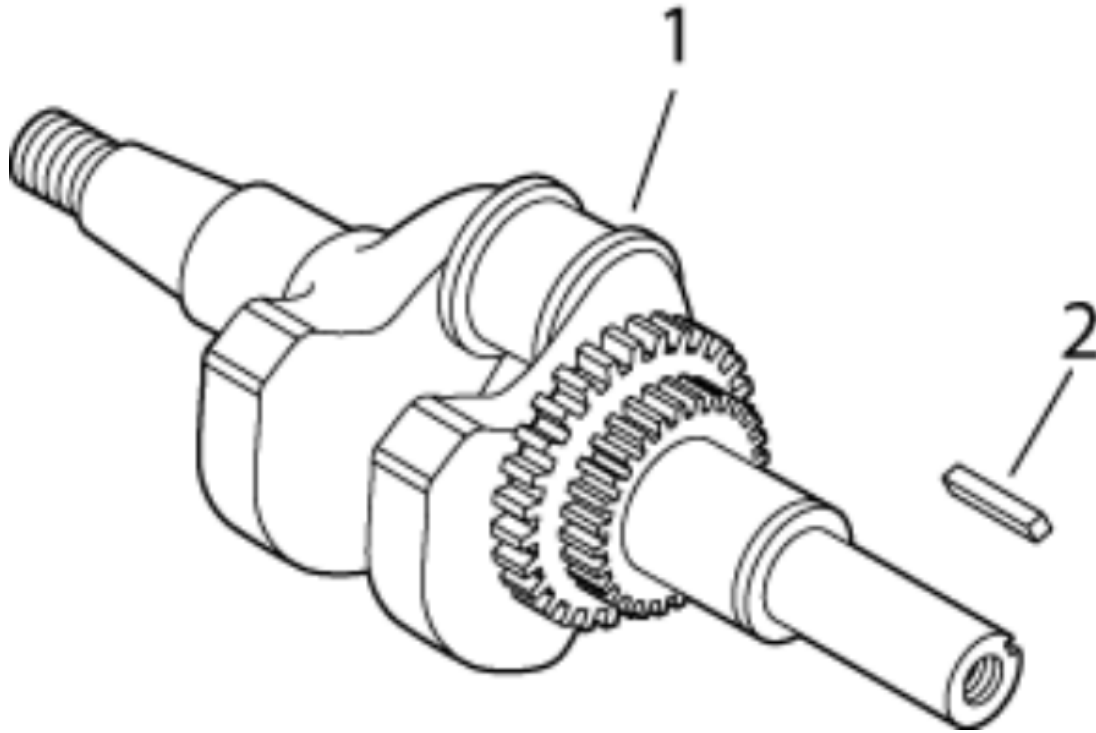
Ref #	Part	Description	Qty
1	63 086 14-S	SCREW	5
2	63 027 02-S	KIT, BLWR HOUSING	1
3	63 063 02-S	BAFFLE, CYL	1
	63 086 07-S	SCREW, BH	1



Crankcase 2-7-6

Ref #	Part	Description	Qty
1	63 561 06-S	Crankcase	1
2	63 032 07-S	Seal, governorcrossshaft	1
3	63 874 10-S	Piston w/ring set (Std.)	1
	63 874 11-S	Piston w/ring set (.25)	1
	63 874 12-S	Piston w/ring set (.50)	1
4	63 018 03-S	Retainer, piston pin	2
5	63 108 10-S	Ring set, piston (Std.)	1
	63 108 11-S	Ring set, piston (.25)	1
	63 108 12-S	Ring set, piston (.50)	1
6	63 067 02-S	Rod, connecting	1
7	63 032 06-S	Seal, oil	1
8	63 030 05-S	Bearing	2
9	63 041 15-S	Gasket, closureplate	1
10	63 009 04-S	Plate, closure	1
11	63 086 29-S	Screw, closureplate	6
12	63 468 01-S	Washer	2
13	63 043 07-S	Assembly, governorgear (Includes 14)	1
14	63 380 01-S	Pin	2
15	63 018 01-S	Ring, snap	1
16	63 241 03-S	Collar	1
17	63 144 08-S	Shaft, governor	1
18	63 380 04-S	Pin, dowel	2
19	63 154 03-S	Clip	1
20	63 468 08-S	Washer	1
21	63 144 07-S	Shaft, governorcross	1
22	63 012 02-S	Camshaft	1
23	63 422 02-S	Shim	1
24	63 089 01-S	Spring (ACR)	1
25	63 139 07-S	Plug, drain	2
26	63 041 14-S	Gasket	2

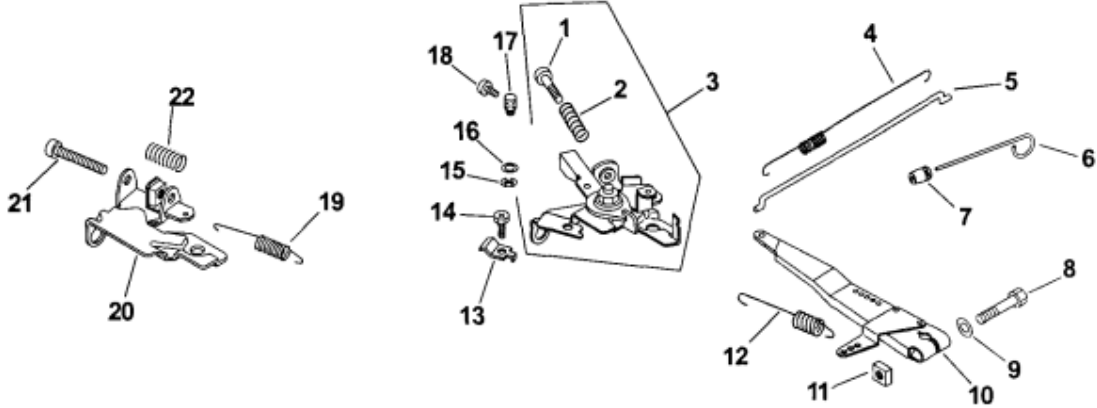
Crankshaft 1-7-5



Crankshaft 1-7-5

Ref #	Part	Description	Qty
1	63 014 05-S	Crankshaft	1
2	63 340 05-S	Key, straight 4.7 mm	1

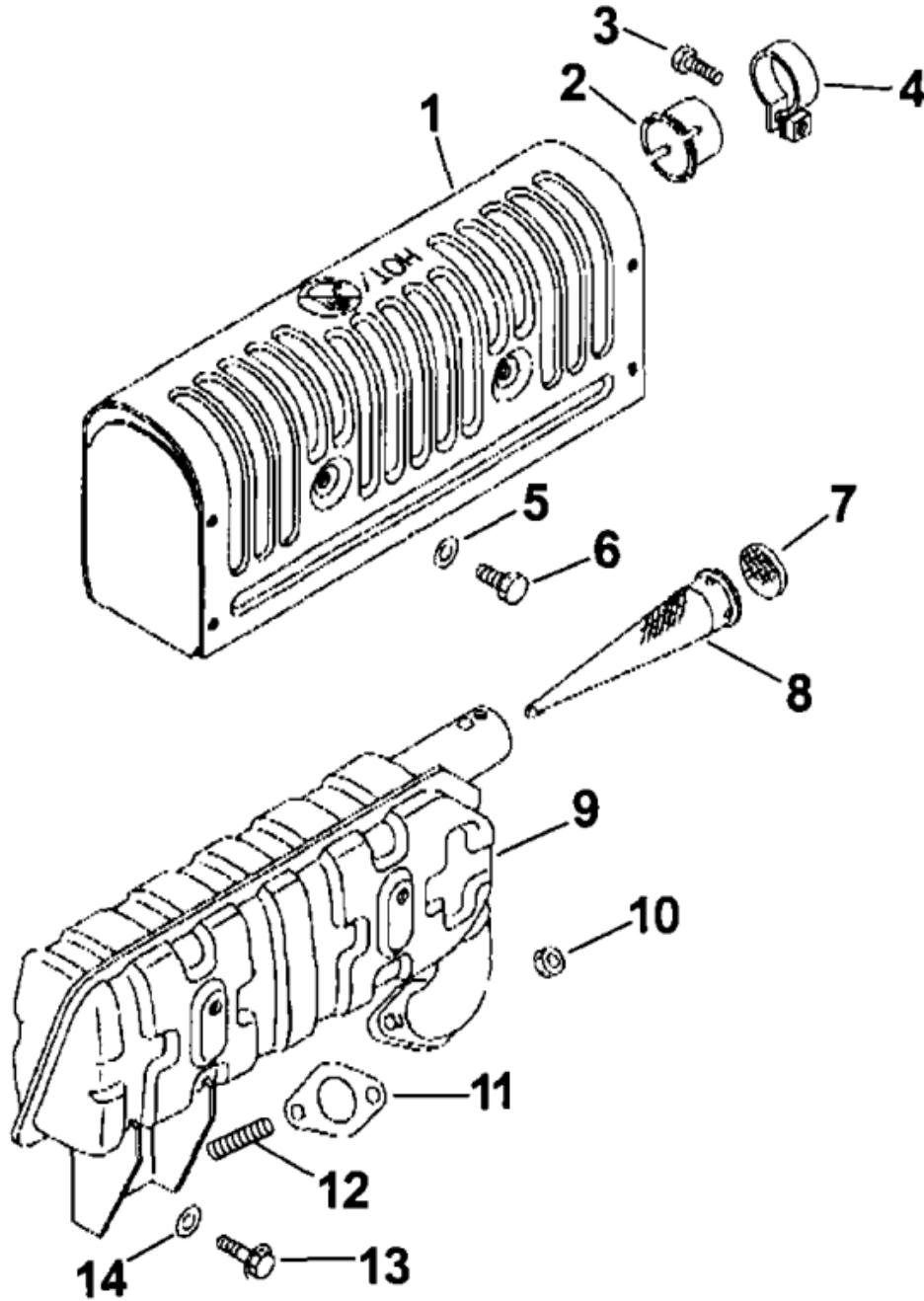
EngineControls 9-7-5



EngineControls 9-7-5

Ref #	Part	Description	Qty
1	63 086 03-S	SCREW, PAN HEAD	1
2	63 089 03-S	SPRING, COMPRESSION	1
3	63 090 05-S	LEVER, THROTTLE (Includes 1,2)	1
4	63 089 13-S	SPRING, LINKAGE	1
5	63 079 03-S	LINKAGE, THROTTLE	1
6	63 090 04-S	LEVER, CHOKE	1
7	63 313 03-S	GROMMET	1
8	63 211 02-S	BOLT	1
9	63 468 04-S	WASHER	1
10	63 090 03-S	LEVER, GOVERNOR	1
11	63 100 01-S	NUT	1
12	63 089 22-S	SPRING, GOV	1
13	63 237 08-S	BOWDEN CLAMP	1
14	63 086 73-S	SCREW, PAN HEAD	1
15	63 154 04-S	CLIP	1
17	63 237 13-S	CLAMP	1
18	63 086 46-S	SCREW	1
	63 113 01-S	DECAL, SPEED NotIllustrated	1
	63 113 10-S	LABEL, CHOKE NotIllustrated	1

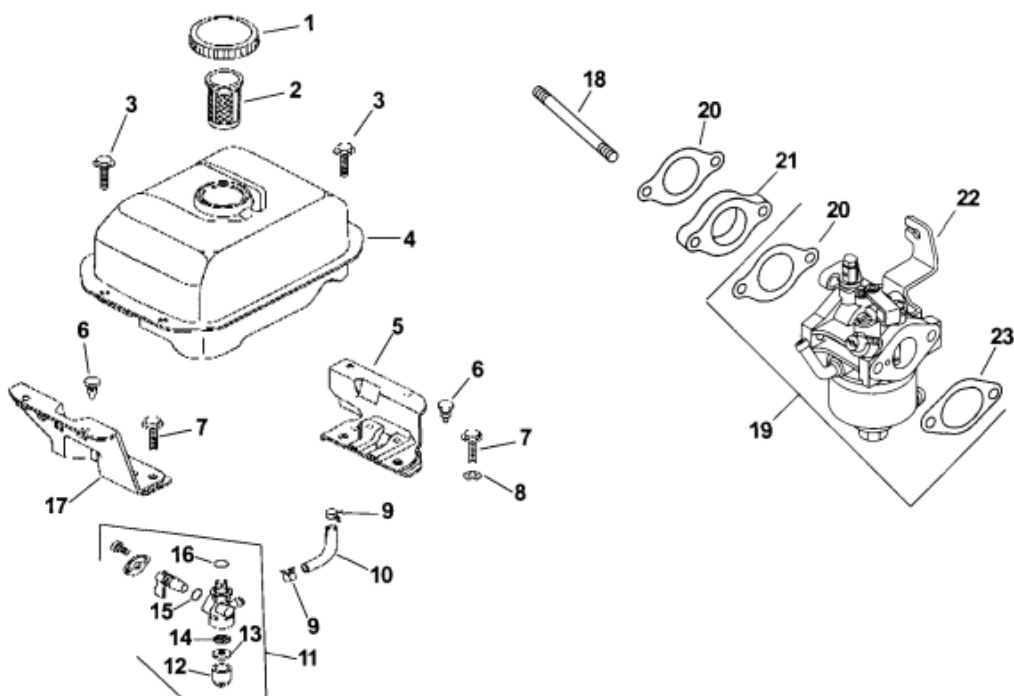
Exhaustsystem 11-7-2



Exhaustsystem 11-7-2

Ref #	Part	Description	Qty
1	63 314 02-S	Guard, muffler	1
2	63 173 05-S	Cap, muffler	1
3	63 086 36-S	Screw	1
4	63 196 01-S	Band, exhaust	1
5	63 468 04-S	Washer	4
6	63 086 37-S	Screw, hex. flange	4
7	63 162 01-S	Net, wire	1
8	63 189 02-S	Arrestor, spark	1
9	63 068 02-S	Muffler	1
10	63 100 16-S	Nut, exhaust	2
11	63 041 21-S	Gasket, exhaust	1
12	63 072 04-S	Stud, exhaust	2
13	63 086 35-S	Screw, hex. flange	1

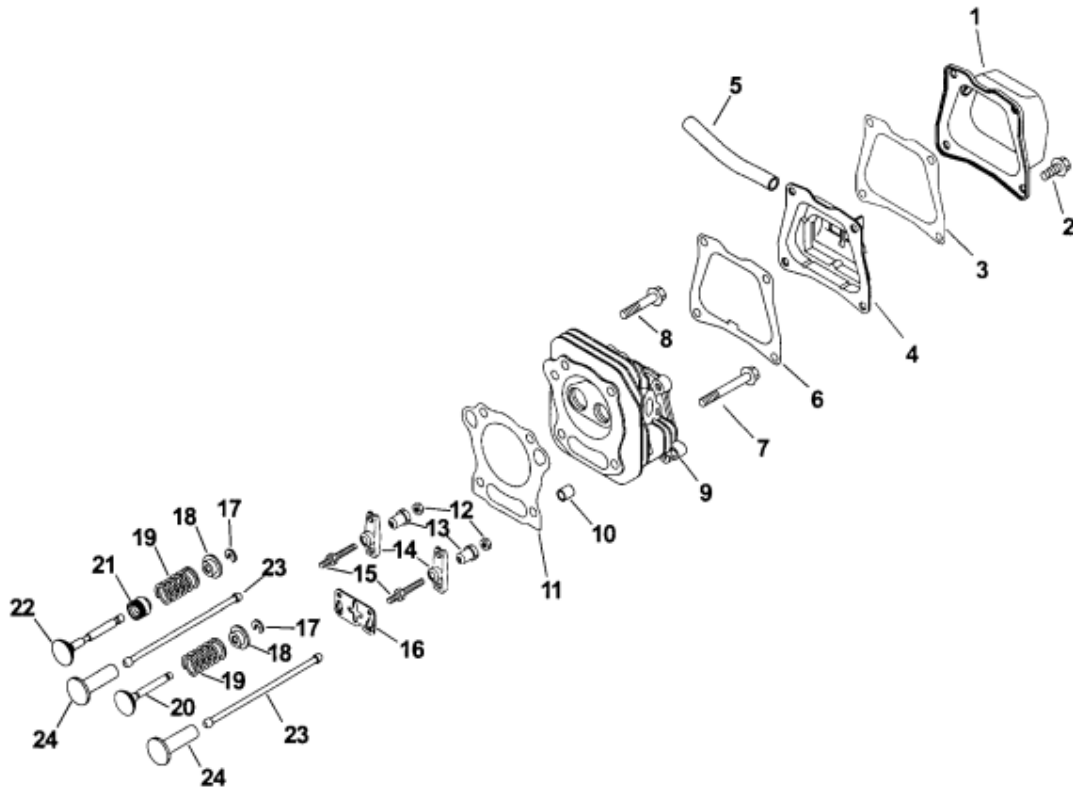
Fuel System



Fuel System

Ref #	Part	Description	Qty
1	63 173 03-S	CAP, FUEL TANK	1
2	63 444 01-S	STRAINER	1
3	63 086 21-S	SCREW	4
4	63 065 02-S	TANK, FUEL	1
5	63 126 04-S	BRACKET, FUEL TANK	1
6	63 139 04-S	PLUG	3
7	63 086 14-S	SCREW	4
8	63 468 10-S	WASHER	3
9	63 154 02-S	CLIP	2
10	63 353 01-S	LINE, FUEL	1
11	63 462 02-S	VALVE, FUEL COCK ASSY (Includes 12-16)	1
12	63 050 01-S	CUP, FILTER	1
13	63 041 09-S	GASKET	1
14	63 050 02-S	FILTER SCREEN	1
15	63 153 09-S	O-RING, FUEL VALVE	1
16	63 041 10-S	GASKET	1
17	63 126 03-S	BRACKET-FUEL TANK	1
18	63 072 03-S	STUD, CARBURETOR	2
19	63 853 05-S	KIT, CARBURETOR W/GASKET (CS6) (Includes 20 [qty. 1],22,23)	1
20	63 041 19-S	GASKET, INTAKE	2
21	63 164 02-S	MANIFOLD, INTAKE	1
22	63 853 05-S	KIT, CARBURETOR W/GASKET (CS6) (Includes 63 757 04-S & 63 757 05-S)	1
23	63 041 20-S	GASKET A/C	1
	63 757 04-S	KIT, CARBURETOR REPAIR (CS4,6) (Includes needle assembly, clip, bowl gasket, bowl screw gasket, air cleaner gasket, & intake gasket [qty. 2]); Not Illustrated	1
	63 757 05-S	KIT, CARBURETOR FLOAT (CS4,6) (Includes float, pin, bowl gasket, bowl screw gasket, air cleaner gasket, & intake gasket [qty. 2]); Not Illustrated	1
	63 113 06-S	DECAL, CAUTION Not Illustrated	1
	63 113 07-S	LABEL, IGNITION Not Illustrated	1
	63 086 71-S	SCREW, FLOAT BOWL	1
	63 086 86-S	SCREW, PAN HEAD	1
	63 041 28-S	GASKET, BOWL	1
	63 041 29-S	GASKET, BOWL SCREW	1

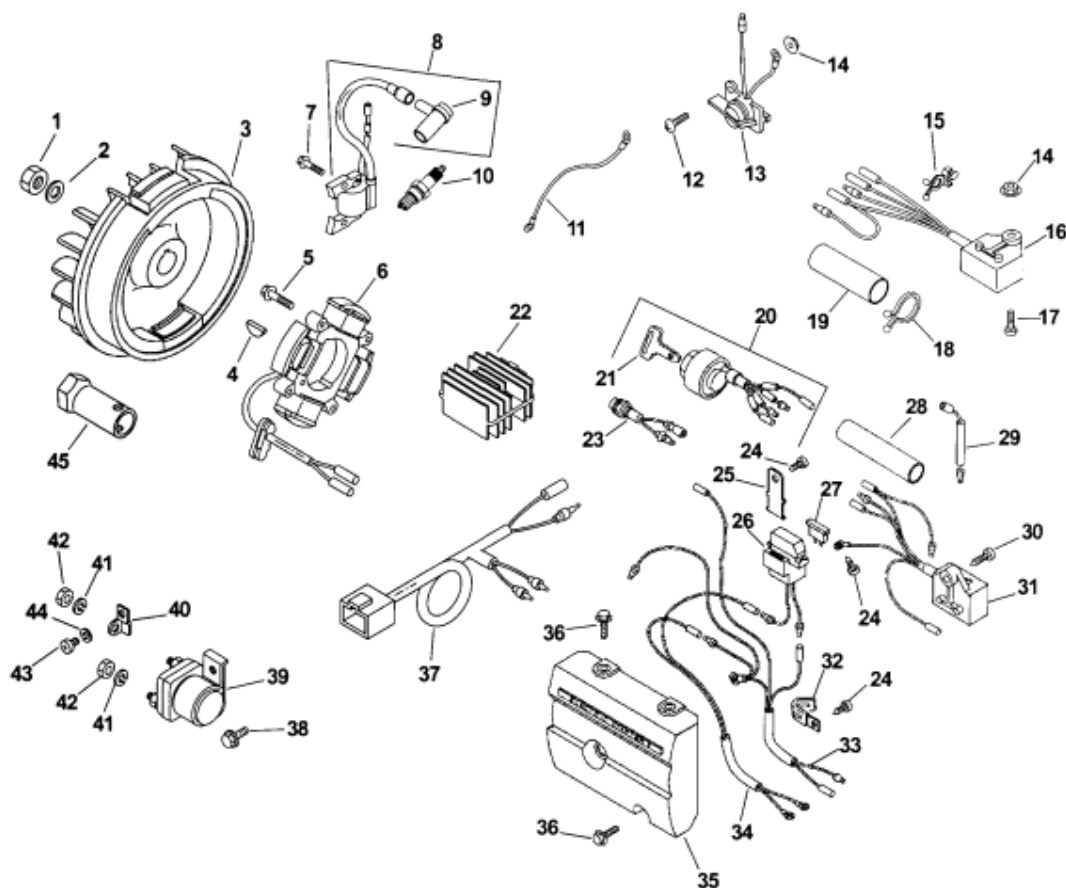
Head/Valve/Breather 4-7-3



Head/Valve/Breather 4-7-3

Ref #	Part	Description	Qty
1	63 096 04-S	Cover, valve	1
2	63 086 14-S	Screw, valvecover	4
3	63 041 18-S	Gasket, valvecover	1
4	63 033 02-S	Breatherassembly	1
5	63 326 03-S	Hose, breather	1
6	63 041 17-S	Gasket, breather	1
7	63 086 30-S	Screw, cylinder head	2
8	63 086 31-S	Screw, cylinder head	2
9	63 318 03-S	Head, cylinder	1
10	63 380 08-S	Pin, dowel	2
11	63 041 22-S	Gasket, cylinder head	1
12	63 100 12-S	Nut	2
13	63 599 01-S	Pivot, rockerarm	2
14	63 186 02-S	Arm, rocker	2
15	63 086 32-S	Screw, valveadjusting	2
16	63 316 02-S	Guide, pushrod	1
17	63 462 03-S	Keeper, valve	2
18	63 173 04-S	Cap, valvespring	2
19	63 089 12-S	Spring, valve	2
20	63 017 03-S	Valve, intake	1
21	63 032 09-S	Seal, valvestem	1
22	63 016 03-S	Valve, exhaust	1
23	63 411 02-S	Rod, push	2
24	63 351 02-S	Lifter, valve	2

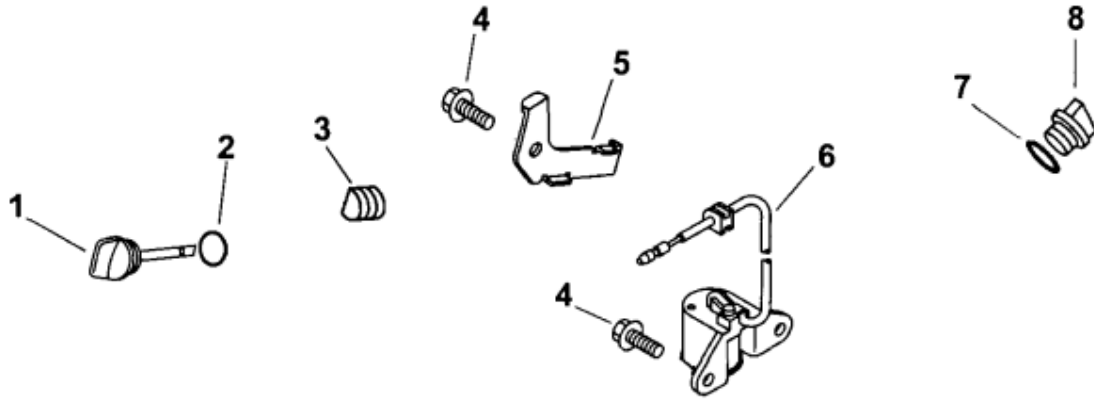
Ignition/Electrical 5-7-38



Ignition/Electrical 5-7-38

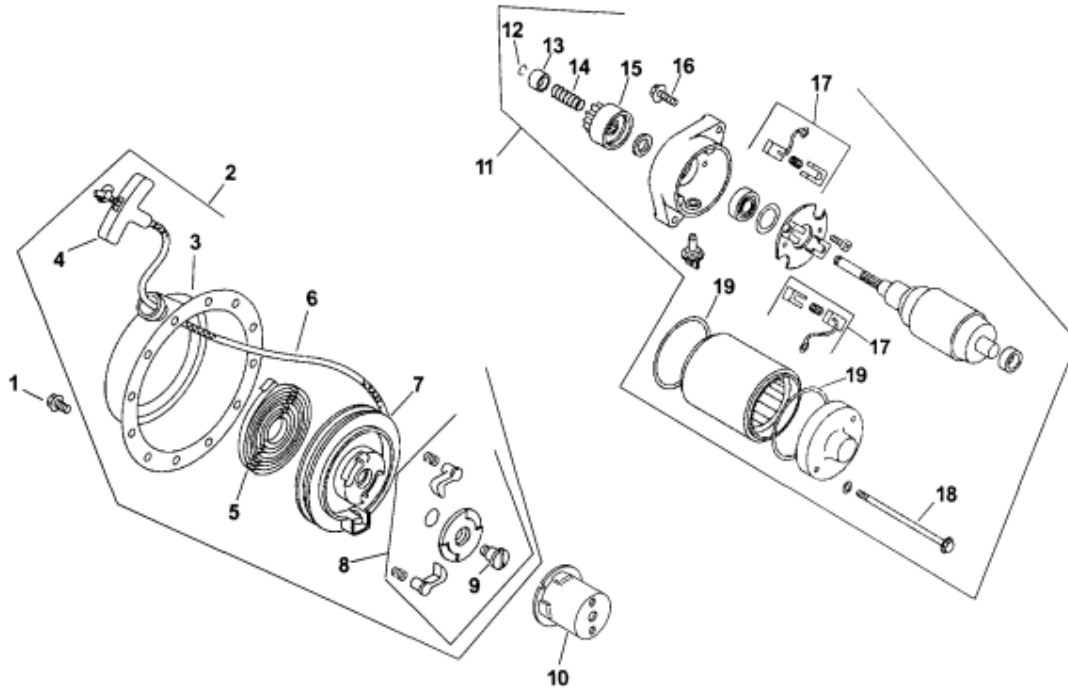
Ref #	Part	Description	Qty
1	63 100 13-S	NUT, FLYWHEEL	1
2	63 468 15-S	WASHER, F.W.	1
3	63 025 03-S	FLYWHEEL, MANUAL ST	1
4	63 340 02-S	KEY, WOODRUFF	1
7	63 086 20-S	SCREW	2
8	63 755 06-S	IGNITION MODULE KIT-USE 63 755 40-S (Includes 9)	1
9	63 173 02-S	CAP ASSY	1
10	66 132 01-S	SPARK PLUG	1
11	63 518 07-S	LEAD,KILL	1
12	63 086 15-S	SCREW, STOP SWITCH	1
13	63 099 02-S	STOP SWITCH	1
14	63 100 05-S	NUT, STOP SWITCH	2
15	63 237 09-S	CLAMP	1
16	63 099 11-S	OIL SWITCH ASSY -USE 63 099 03-S	1
17	63 086 16-S	SCREW, PAN HEAD	1
18	63 237 02-S	CLAMP, WIRE	1
19	63 431 05-S	SLEEVE, WIRING	1
23	63 352 01-S	OIL LIGHT	1
45	63 213 02-S	TOOL KIT	1

Oil Pan/Lubrication 3-7-4



Oil Pan/Lubrication 3-7-4

Ref #	Part	Description	Qty
1	63 755 09-S	KIT, DIPSTICK	1
4	63 086 14-S	SCREW	3
5	63 237 01-S	CLAMP	1
6	63 099 06-S	OIL SWITCH	1
7	63 153 06-S	O-RING	1
8	63 139 08-S	PLUG, OIL	1
	63 032 13-S	75OIL SEAL (PTO)	1
	63 032 15-S	SEAL	1
2	63 153 05-S	DIPSTICK KIT USE 63 755 09-S	



StartingSystem 7-7-4

Ref #	Part	Description	Qty
1	63 086 19-S	Screw, hex. flange	3
2	63 165 02-S	Starter, retractable (Includes 3-9)	1
3	63 081 05-S	Housing assembly	1
4	63 166 01-S	Handle, starter	1
5	63 089 21-S	Spring, recoil	1
6	63 160 02-S	Rope, starting	1
7	63 093 02-S	Pulley	1
8	63 757 06-S	Kit, pawl repair (Includes 9)	1
9	63 086 52-S	Screw	1
10	63 109 02-S	Cup, starter drive	1