

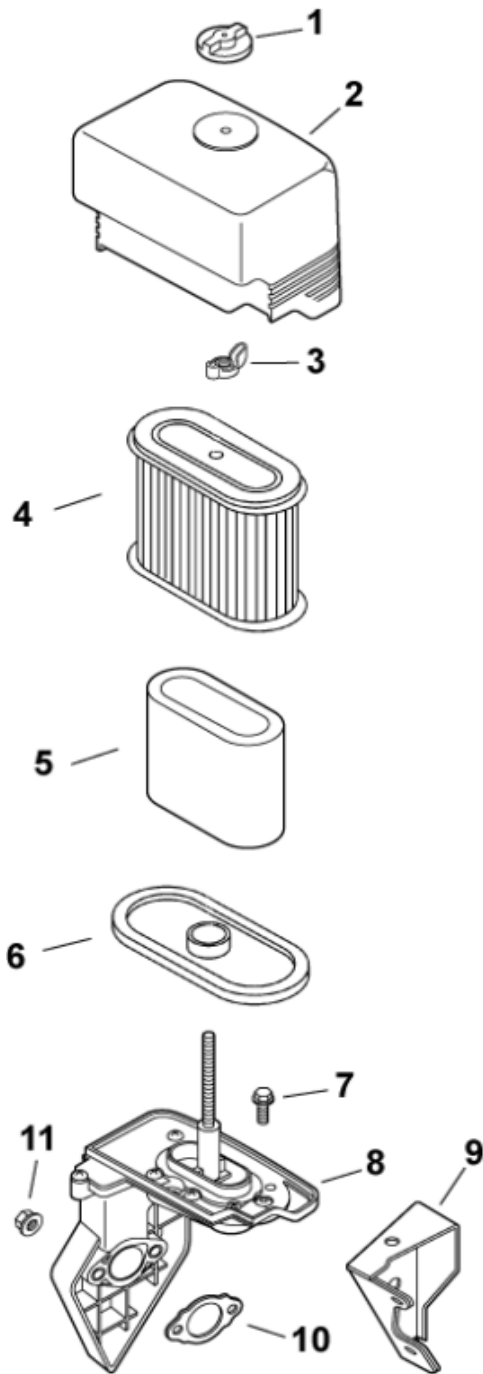
KOHLER.ENGINES

COMMAND PRO CS

CS 12T – 12 HP



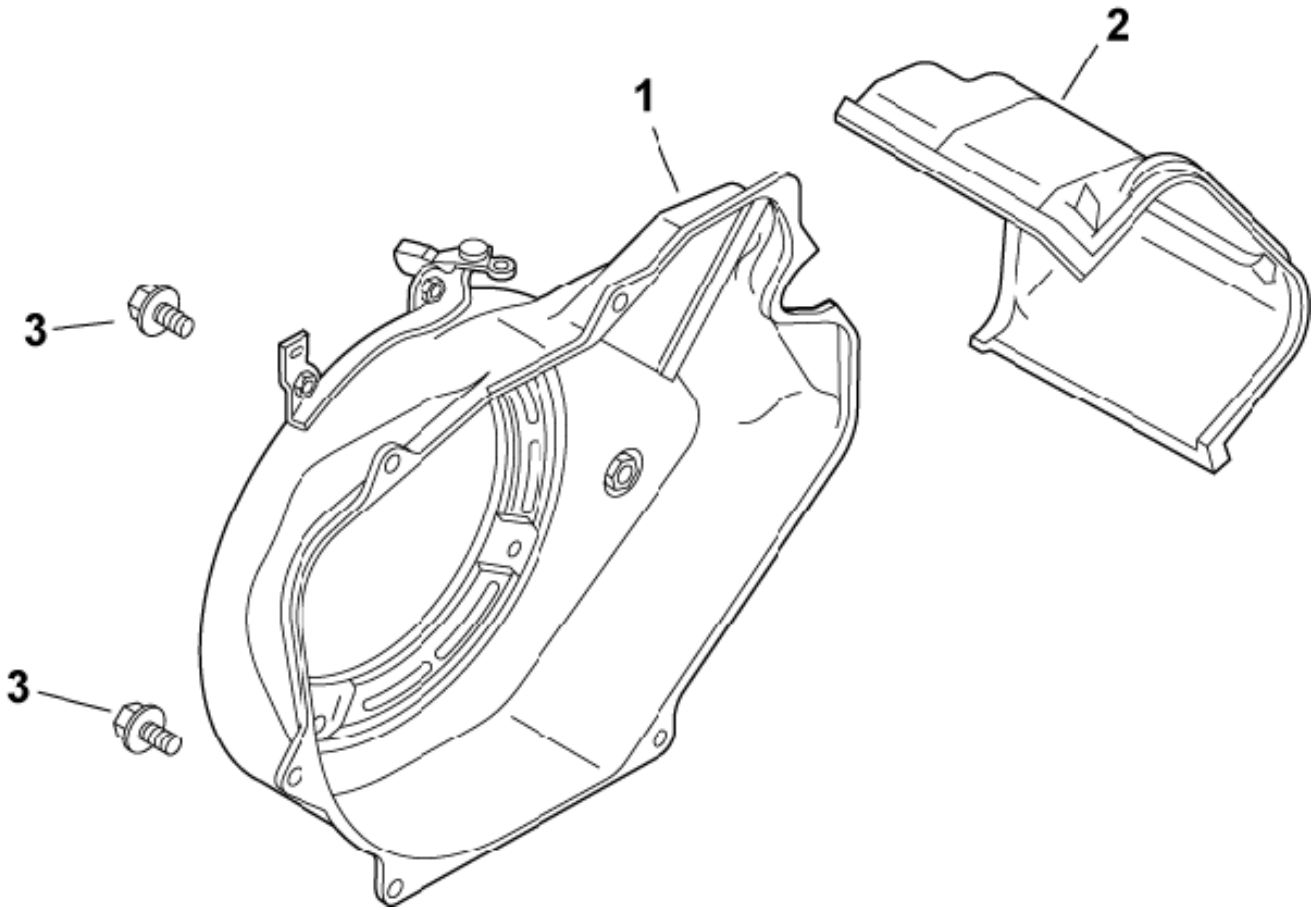
Air Intake/Filtration



Air Intake/Filtration

Ref #	Part	Description	Qty
1	63 100 19-S	NUT	1
2	63 096 19-S	COVER, A/C, FOR 600 SERIES	1
3	63 100 21-S	NUT, WING A/C	1
4	63 083 15-S	FILTER, PAPER 600 SERIES SPECS	1
5	63 083 16-S	PRE-CLEANER, 600 SERIES SPECS	1
6	63 032 21-S	SEAL, A/C FOR 600 SERIES SPECS	1
7	63 086 20-S	SCREW	2
8	63 094 10-S	BASE, A/C, FOR 600 SERIES	1
9	63 126 20-S	BRACKET, A/C 600 SERIES SPECS	1
10	63 041 08-S	GASKET, A/C	1
11	63 100 17-S	NUT A/C H-D	2
	63 113 03-S	DECAL, A/C NOT ILLUSTRATED	1

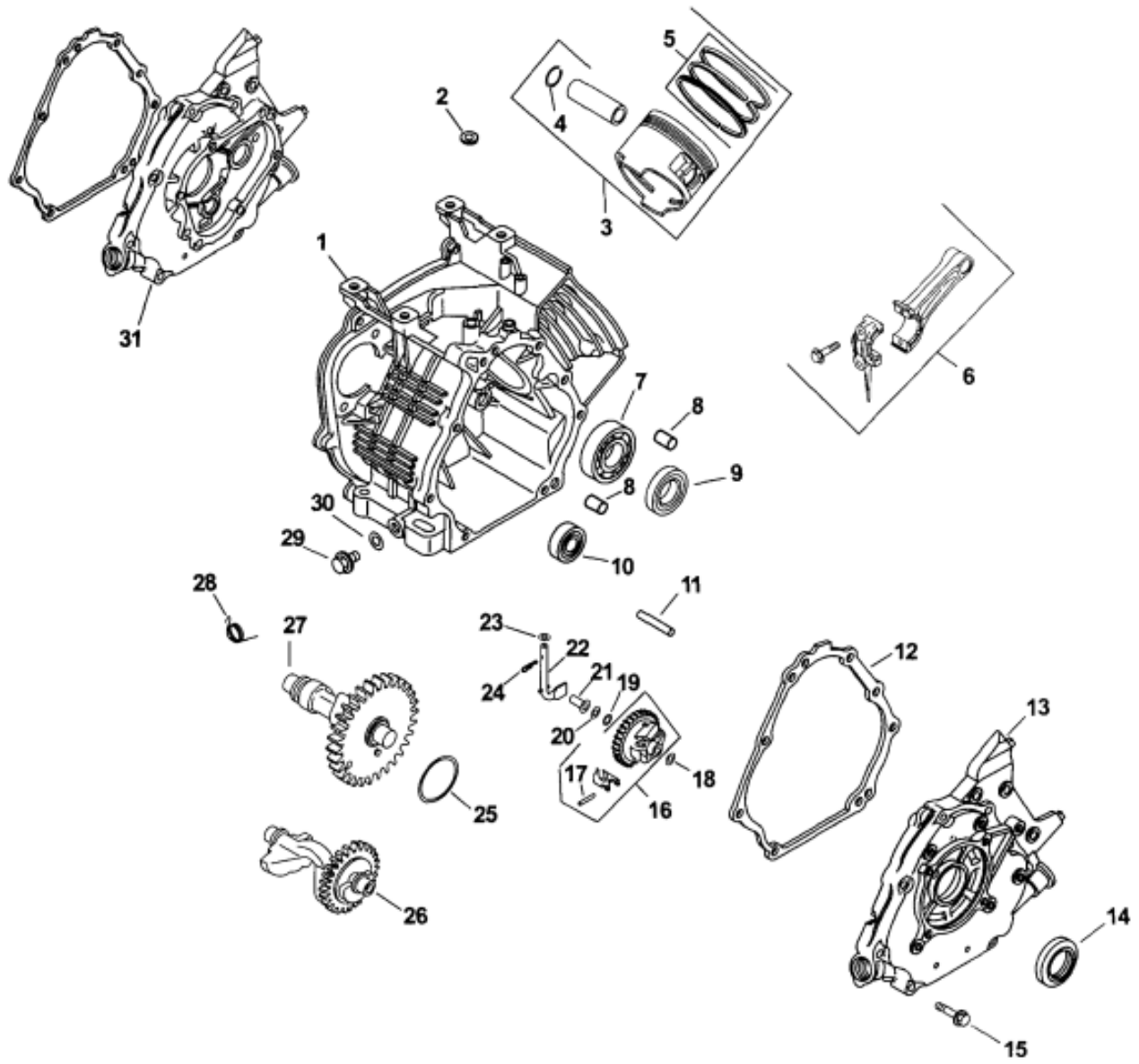
BlowerHousing&Baffles



BlowerHousing&Baffles

Ref #	Part	Description	Qty
1	63 027 06-S	KIT, BLOWER HOUSING 600 SERIES	1
2	63 063 01-S	BAFFLE, CYL	1
3	63 086 14-S	SCREW	6

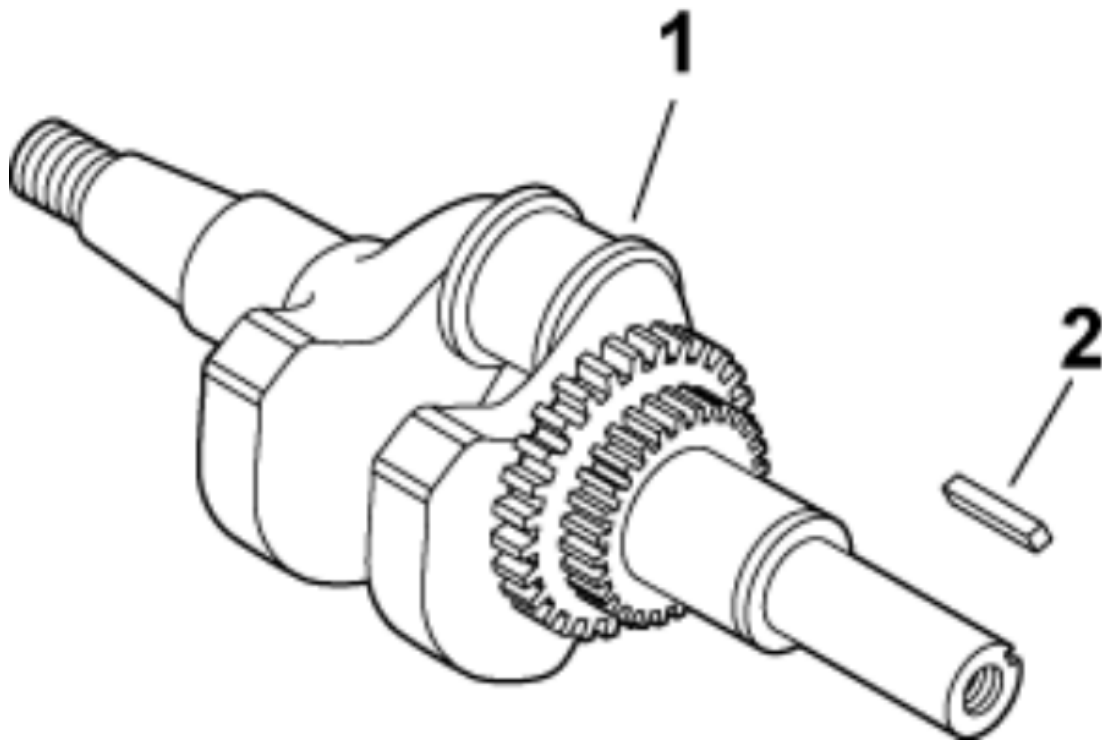
Crankcase



Crankcase

Ref #	Part	Description	Qty
1	63 561 01-S	Crankcase	1
2	63 032 03-S	Seal, governorcrossshaft	1
3	63 874 04-S	Piston w/ring set (Std.)	1
3	63 874 05-S	Piston w/ring set (.25)	1
3	63 874 06-S	Piston w/ring set (.50)	1
4	63 018 02-S	Retainer, piston pin	2
5	63 108 01-S	Ring set, piston (Std.)	1
5	63 108 02-S	Ring set, piston (.25)	1
5	63 108 03-S	Ring set, piston (.50)	1
6	63 067 01-S	Rod, connecting	1
7	63 030 01-S	Bearing	1
8	63 380 04-S	Pin, dowel	2
9	63 030 03-S	Bearing	1
10	63 030 02-S	Bearing	1
11	63 144 03-S	Shaft, governor	1
12	63 041 07-S	Gasket, closureplate	1
13	63 009 02-S	Plate, closure	1
14	63 032 02-S	Seal, oil	2
15	63 086 12-S	Screw, closureplate	8
16	63 043 08-S	Assembly, governorgear (Includes 17)	1
17	63 380 01-S	Pin	3
18	63 468 01-S	Washer	1
19	63 018 01-S	Ring, snap	1
20	63 468 02-S	Washer	1
21	63 241 01-S	Collar	1
22	63 144 01-S	Shaft, governorcross	1
23	63 468 03-S	Washer	2
24	63 154 01-S	Clip	1
26	63 144 02-S	Shaft, balance	1
27	63 012 01-S	Camshaft	1
28	63 089 01-S	Spring (ACR)	1
29	63 139 01-S	Plug, drain	2
30	63 041 01-S	Gasket	2

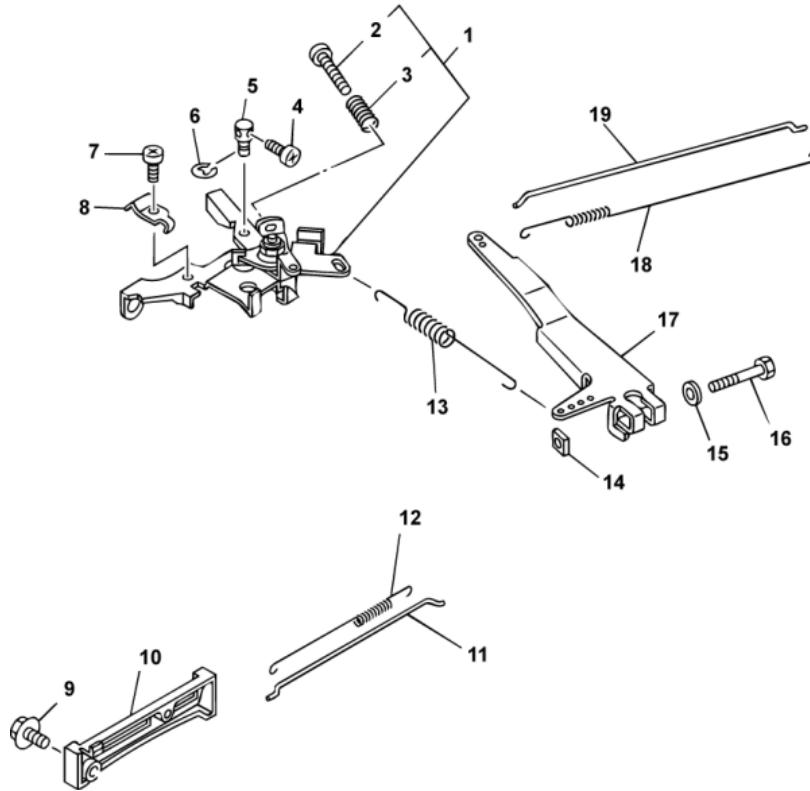
Crankshaft



Crankshaft

Ref #	Part	Description	Qty
1	63 014 16-S	CRANKSHAFT	1
2	63 340 01-S	KEY, STRAIGHT 6.3MM	1

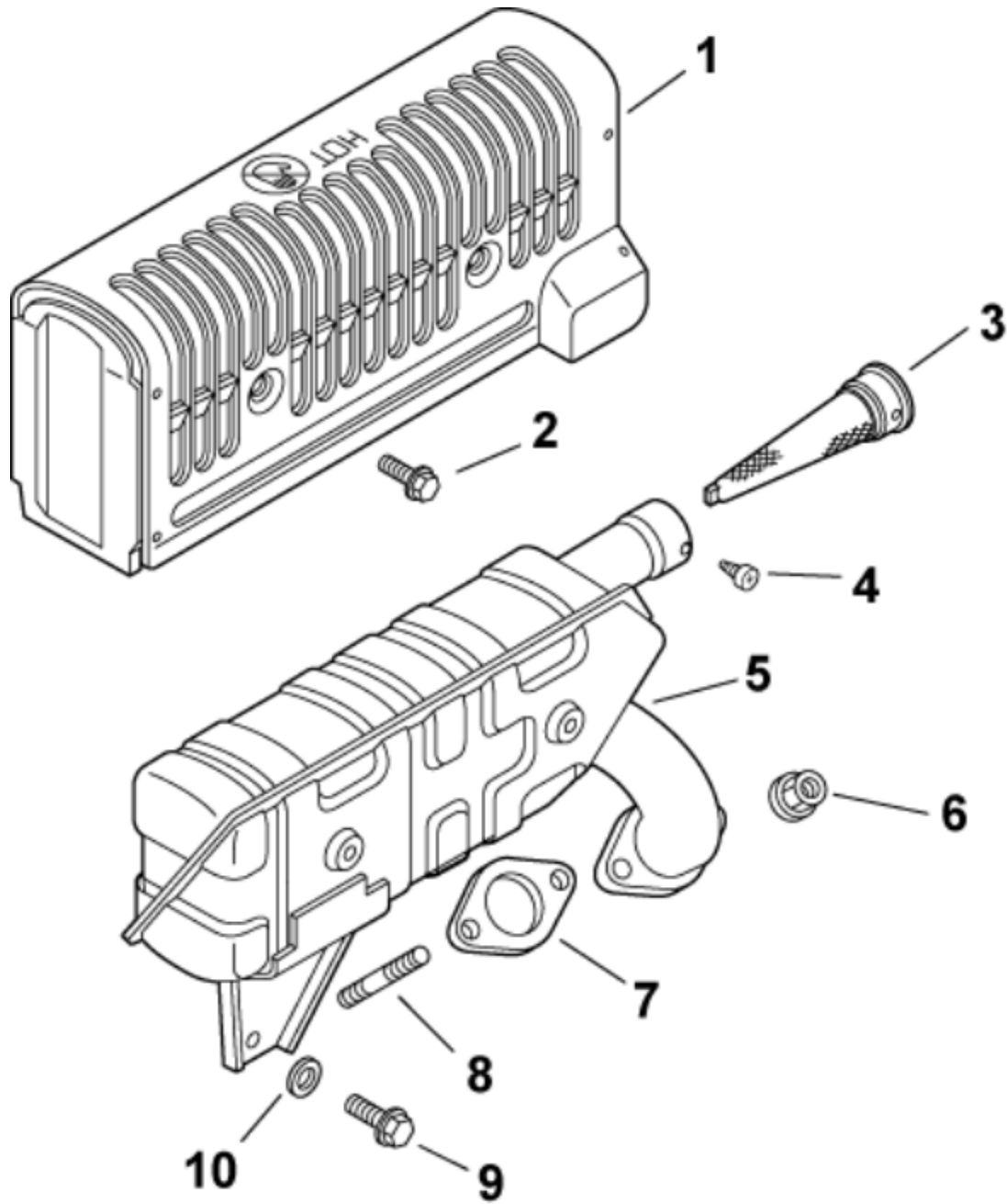
EngineControls



EngineControls

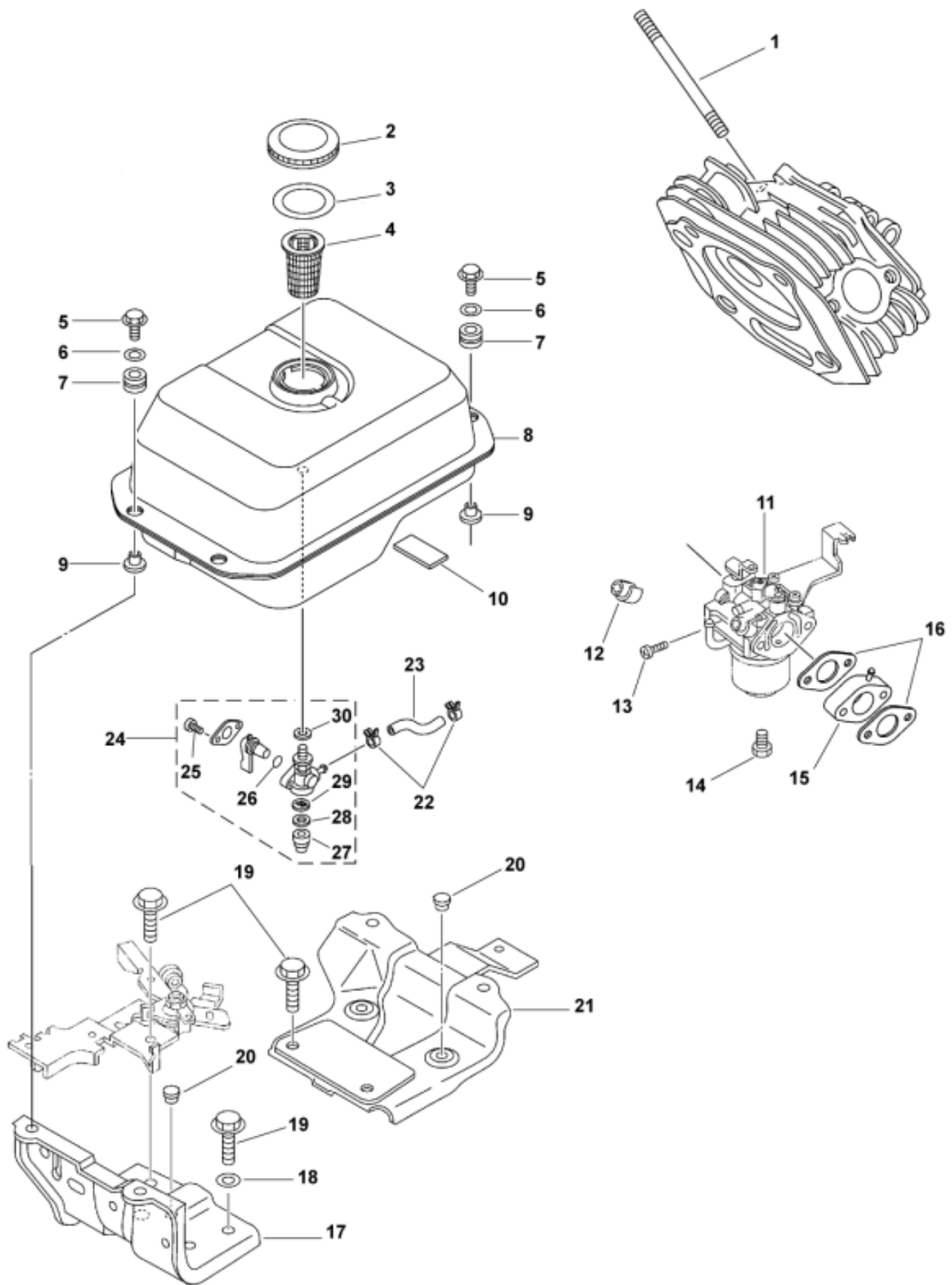
Ref #	Part	Description	Qty
1	63 090 02-S	LEVER, THROTTLE	1
2	63 086 03-S	SCREW, PAN HEAD	1
3	63 089 03-S	SPRING, COMPRESSION	1
4	63 086 73-S	SCREW, PAN HEAD	1
5	63 237 13-S	CLAMP	1
6	63 154 04-S	CLIP	1
7	63 086 46-S	SCREW	2
8	63 237 08-S	BOWDEN CLAMP	1
9	63 086 08-S	SCREW	2
10	63 378 01-S	CONTROL PANEL	1
11	63 079 02-S	LINKAGE, CHOKE	1
12	63 089 06-S	SPRING, CHOKE	1
13	63 089 04-S	SPRING, GOVERNOR	1
14	63 100 01-S	NUT	1
15	63 468 04-S	WASHER	1
16	63 211 02-S	BOLT	1
17	63 090 01-S	LEVER, GOVERNOR	1
18	63 089 02-S	SPRING, LINKAGE	1
19	63 079 01-S	LINKAGE, THROTTLE	1
	63 113 01-S	DECAL, SPEED NOT ILLUSTRATED	1
	63 113 02-S	DECAL, CHOKE NOT ILLUSTRATED	1

Exhaust



Exhaust

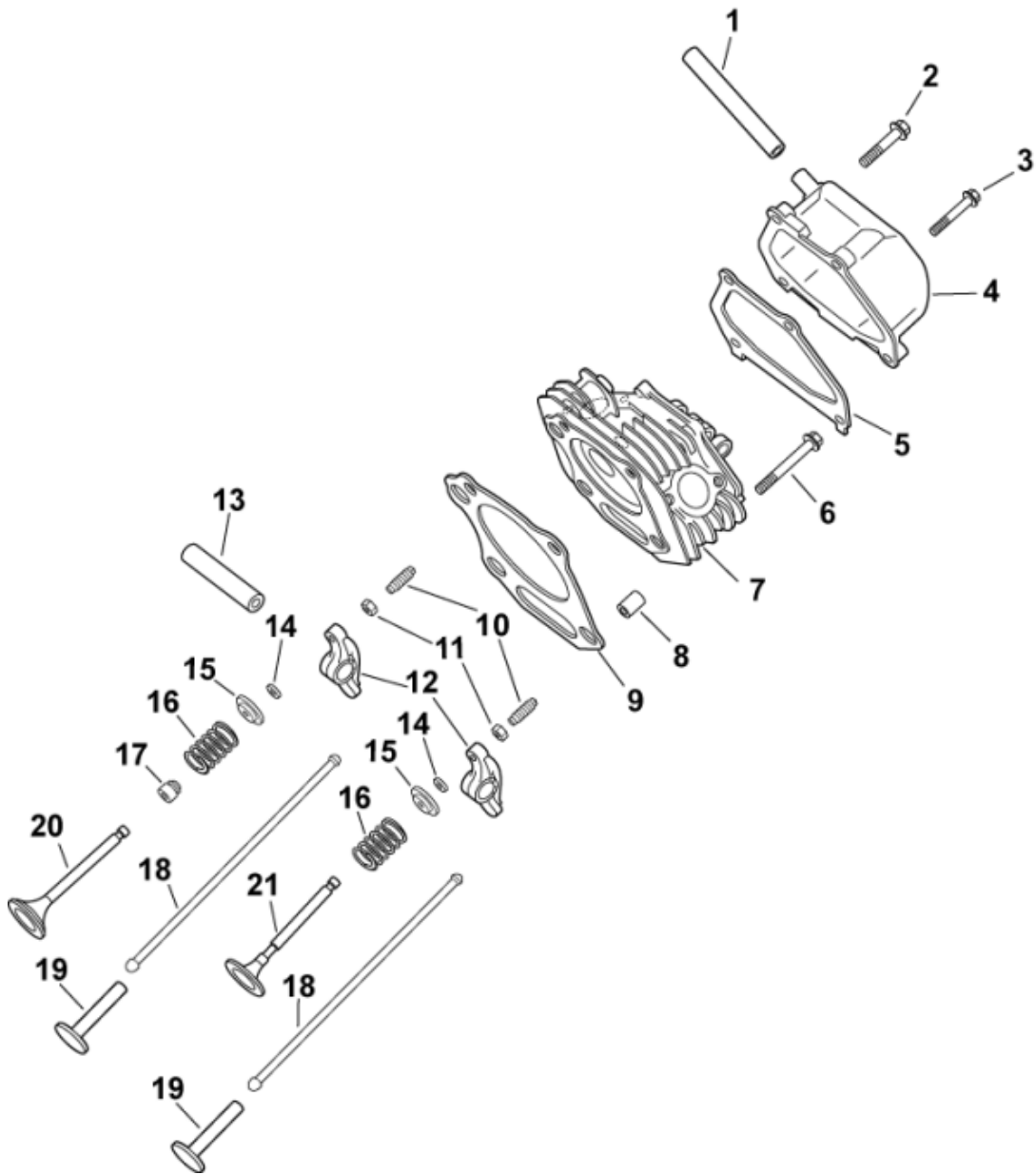
Ref #	Part	Description	Qty
1	63 755 14-S	MUFFLER GUARD KIT (LF)	1
2	63 086 62-S	SCREW, GUARD	4
3	63 189 01-S	SPARK ARRESTER	1
4	63 086 09-S	SCREW, SELF-TAP	1
5	63 068 01-S	MUFFLER	1
6	63 100 03-S	NUT, EXHAUST	2
7	63 041 06-S	GASKET, EXHAUST	1
8	63 072 01-S	STUD	2
9	63 086 10-S	SCREW, HEX FLANGE	1
10	63 468 05-S	WASHER	1



Fuel System

Ref #	Part	Description	Qty
1	63 072 02-S	STUD	2
2	63 173 03-S	CAP, FUEL TANK	1
3	63 032 23-S	SEAL, GAS CAP	1
4	63 444 01-S	STRAINER	1
5	63 086 20-S	SCREW	4
6	63 468 09-S	WASHER	4
7	63 313 01-S	GROMMET	4
8	63 065 01-S	FUEL TANK	1
9	63 241 02-S	COLLAR	4
10	63 263 01-S	DAMPER, LOCATING	1
11	63 853 25-S	KIT, CARBURETOR	1
12	63 173 07-S	CAP, CARBURETOR ADJUSTING	1
13	63 086 65-S	SCREW	1
14	63 086 72-S	SCREW, FLOAT BOWL, L.F.	1
15	63 164 01-S	MANIFOLD, INTAKE	1
16	63 041 13-S	GASKET, INTAKE	2
17	63 126 18-S	BRACKET, TANK - FOR 600 SERIES	1
18	63 468 10-S	WASHER	1
19	63 086 21-S	SCREW	4
20	63 139 04-S	PLUG	3
21	63 126 19-S	BRACKET, TANK 600 SERIES	1
22	63 154 02-S	CLIP	2
23	63 326 02-S	HOSE	1
24	63 462 02-S	VALVE, FUEL COCK ASSEMBLY (includes 25-30)	1
25	63 086 86-S	SCREW, PAN HEAD	1
26	63 153 09-S	O-RING, FUEL VALVE	1
27	63 050 01-S	CUP, FILTER	1
28	63 041 09-S	GASKET	1
29	63 050 02-S	FILTER SCREEN	1
30	63 041 10-S	GASKET	1
	63 113 06-S	DECAL, CAUTION NOT ILLUSTRATED	1
	63 757 10-S	CARB REPAIR KIT CS10 & 12 NOT ILLUSTRATED	1
	63 757 02-S	CARB FLOAT KIT (CS 10 & 12)	

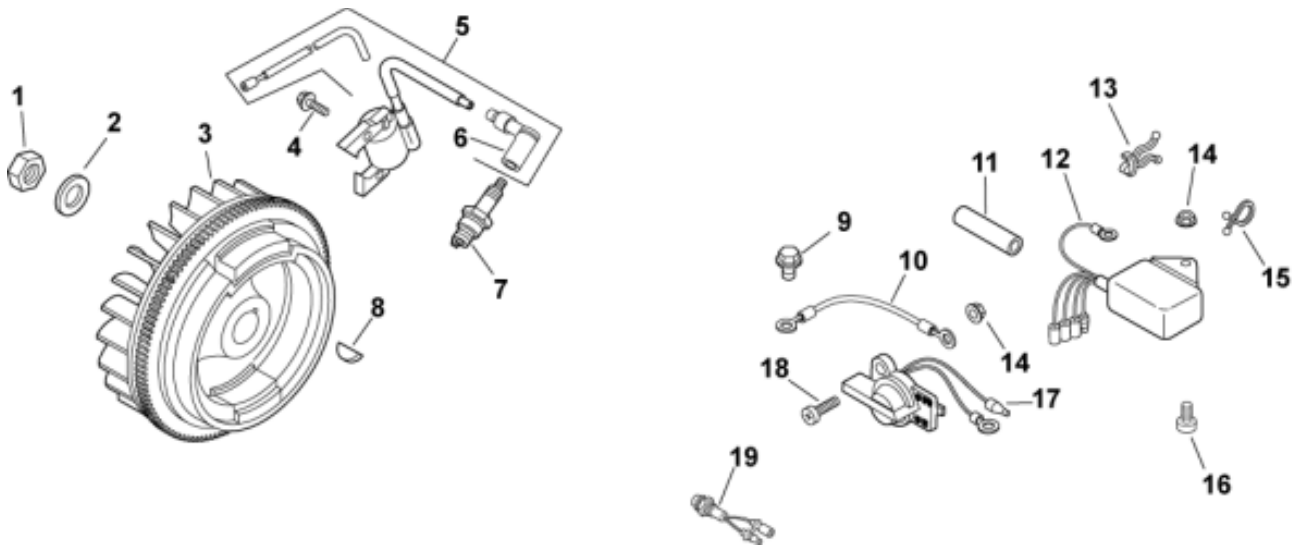
Head/Valve/Breather



Head/Valve/Breather

Ref #	Part	Description	Qty
1	63 326 13-S	KIT, BREATHER HOSE	1
2	63 086 44-S	SCREW, VALVE COVER	2
3	63 086 02-S	SCREW, VALVE COVER	2
4	63 096 18-S	VALVE COVER FOR 600 SERIES	1
5	63 041 04-S	GASKET, VALVE COVER	1
6	63 086 01-S	SCREW, CYL HEAD	4
7	63 318 07-S	CYLINDER HEAD - 600 SERIES	1
8	63 380 03-S	PIN, DOWEL	2
9	63 041 44-S	GASKET, CYL. HEAD	1
10	63 086 05-S	SCREW, VALVE ADJ	2
11	63 100 02-S	NUT	2
12	63 186 01-S	ARM, ROCKER	2
13	63 144 06-S	SHAFT, ROCKER ARM	1
14	63 462 01-S	VALVE, COTTER	2
15	63 173 01-S	CAP, VALVE SPRING	2
16	63 089 05-S	SPRING, VALVE	2
17	63 032 01-S	SEAL, VALVE STEM	1
18	63 411 01-S	PUSH ROD	2
19	63 351 01-S	LIFTER, VALVE	2
20	63 017 01-S	VALVE, INTAKE	1

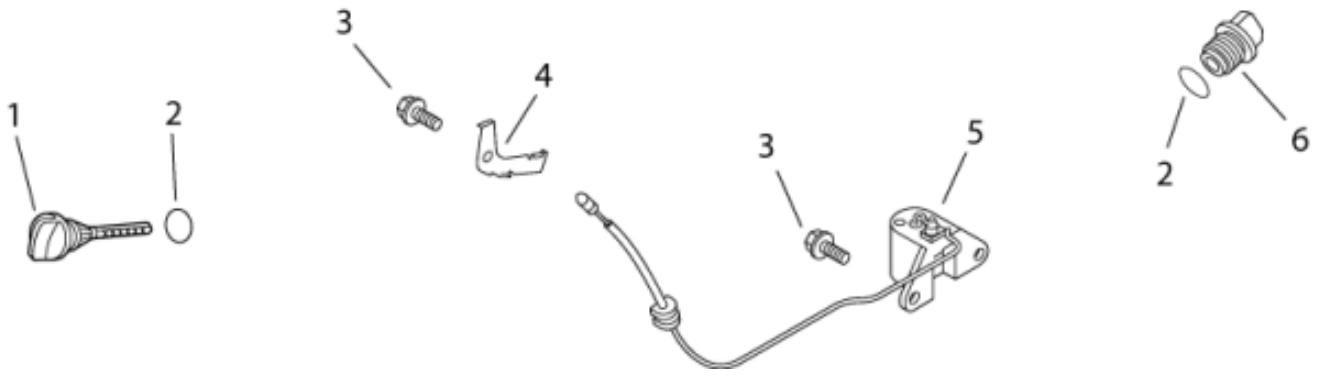
Ignition/Electrical



Ignition/Electrical

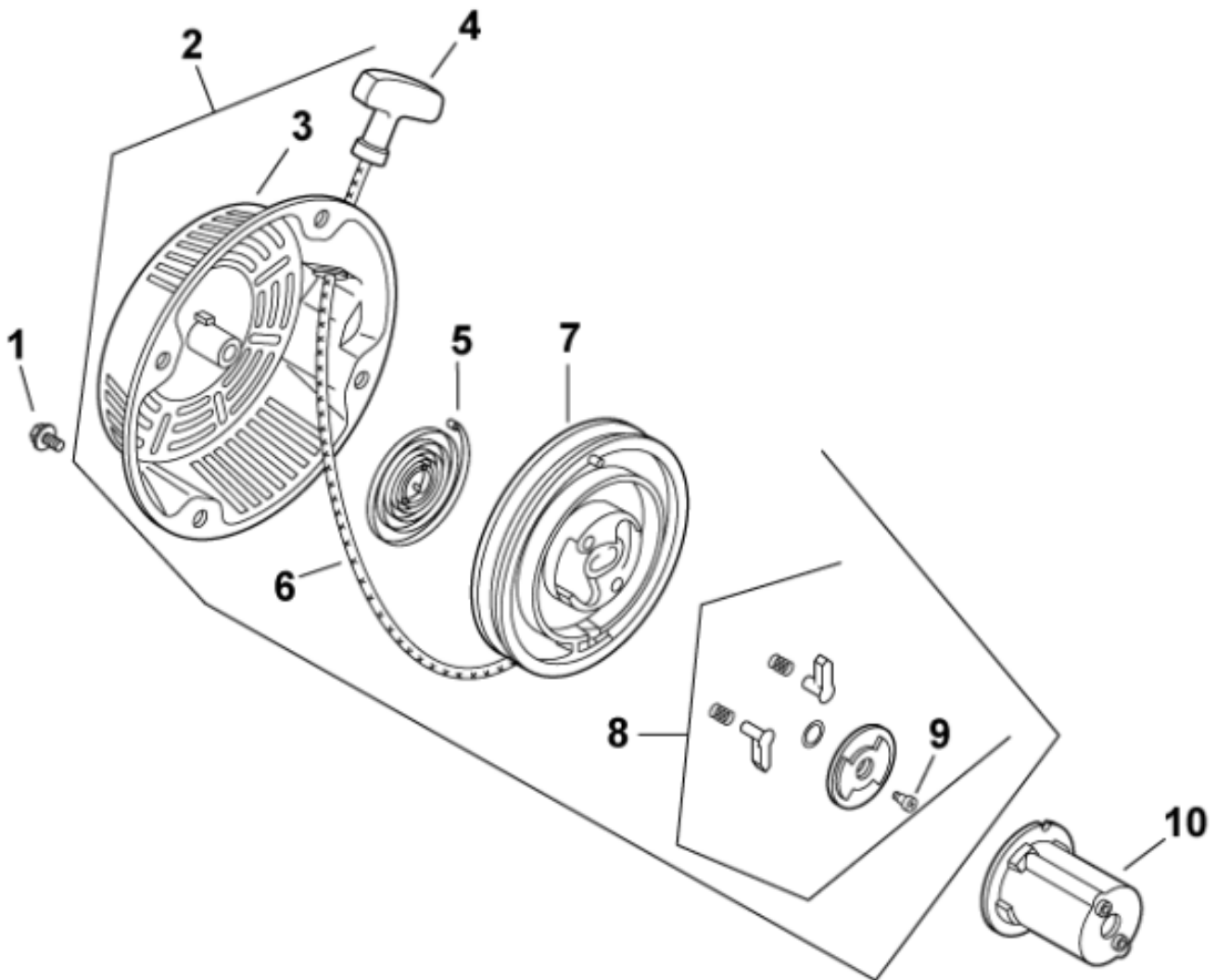
Ref #	Part	Description	Qty
1	63 100 04-S	NUT, FW	1
2	63 468 06-S	WASHER	1
3	63 025 12-S	FLYWHEEL FOR 600 SERIES	1
4	63 086 13-S	SCREW	2
5	63 755 19-S	KIT, IGNIT MODULE (600 SERIES) (includes 6)	1
6	63 173 02-S	CAP ASSEMBLY	1
7	66 132 01-S	SPARK PLUG	1
8	63 340 02-S	KEY, WOODRUFF	1
9	63 086 14-S	SCREW	1
10	63 518 01-S	LEAD	1
11	63 431 01-S	SLEEVE, WIRING	2
12	63 099 11-S	OIL SWITCH ASSY 600 SERIES	1
13	63 237 02-S	CLAMP, WIRE	1
14	63 100 05-S	NUT, STOP SWITCH	2
15	63 237 03-S	CLAMP	1
16	63 086 16-S	SCREW, PAN HEAD	1
17	63 099 02-S	STOP SWITCH	1
18	63 086 15-S	SCREW, STOP SWITCH	2
19	63 352 01-S	OIL LIGHT	1

Oil Pan/Lubrication



Oil Pan/Lubrication

Ref #	Part	Description	Qty
1	63 139 03-S	PLUG, OIL LEVEL	1
2	63 153 01-S	O-RING, PLUG	2
3	63 086 14-S	SCREW	3
4	63 237 01-S	CLAMP	1
5	63 099 01-S	OIL LEVEL GAUGE	1
6	63 139 02-S	PLUG, OIL	1



StartingSystem

Ref #	Part	Description	Qty
1	63 086 62-S	SCREW, GUARD	4
2	63 165 01-S	RETRACTABLE STARTER (includes 3-9)	1
3	63 081 01-S	HOUSING ASSEMBLY	1
4	63 166 01-S	HANDLE	1
5	63 089 07-S	SPRING, STARTER	1
6	63 160 01-S	ROPE, STARTING	1
7	63 093 01-S	PULLEY	1
8	63 757 03-S	KIT,PAWL REPAIR - CS8.5,10,12 (includes 9)	2
9	63 086 18-S	SCREW	1
10	63 109 08-S	DRIVE CUP W/METAL GR SCREEN	1