

# CH395 – 9.5 HP

MANUAL DE PARTES

## KOHLER COMMAND PRO

Cigüeñal Horizontal

**CH395-0011** Velocidad Variable 1800 a 3750 RPM, flecha c/cuñero.

**CH395-0014** Velocidad Variable 1800 a 3750 RPM, flecha c/rosca.

**CH395-0015** Velocidad Constante 3150 RPM, flecha cónica.

**CH395-0016** Velocidad Constante 3750 RPM, flecha cónica.

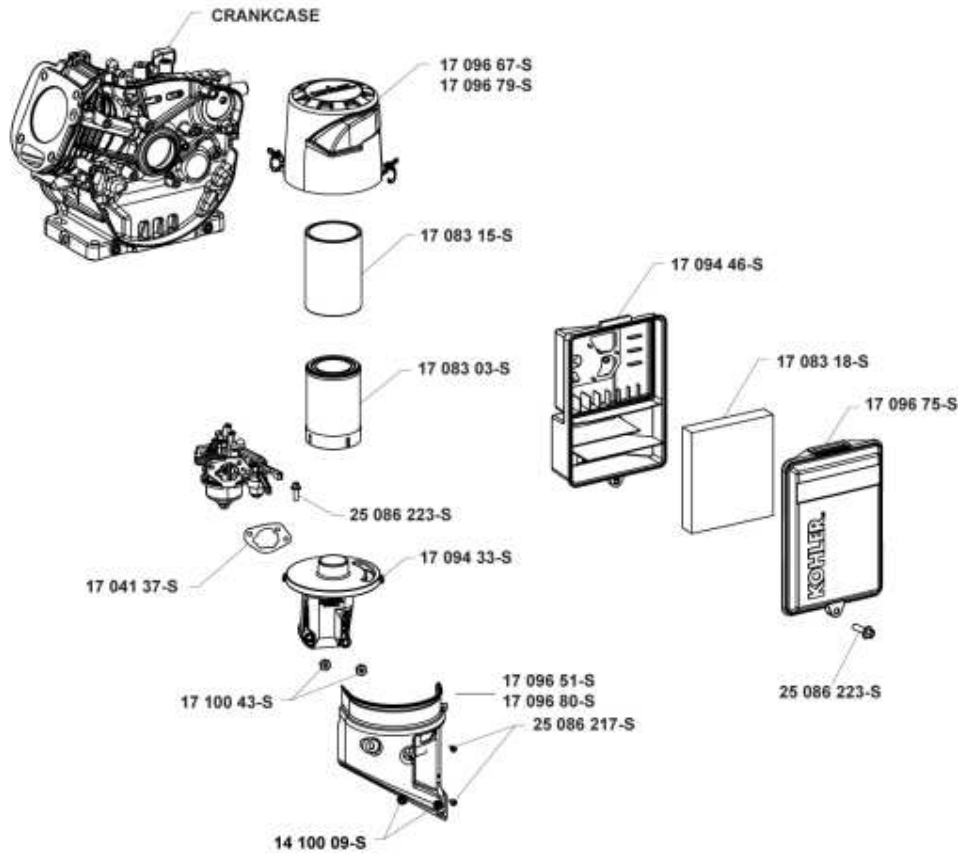


**KOHLER ENGINES**

KOHLER DE MEXICO, SA DE CV

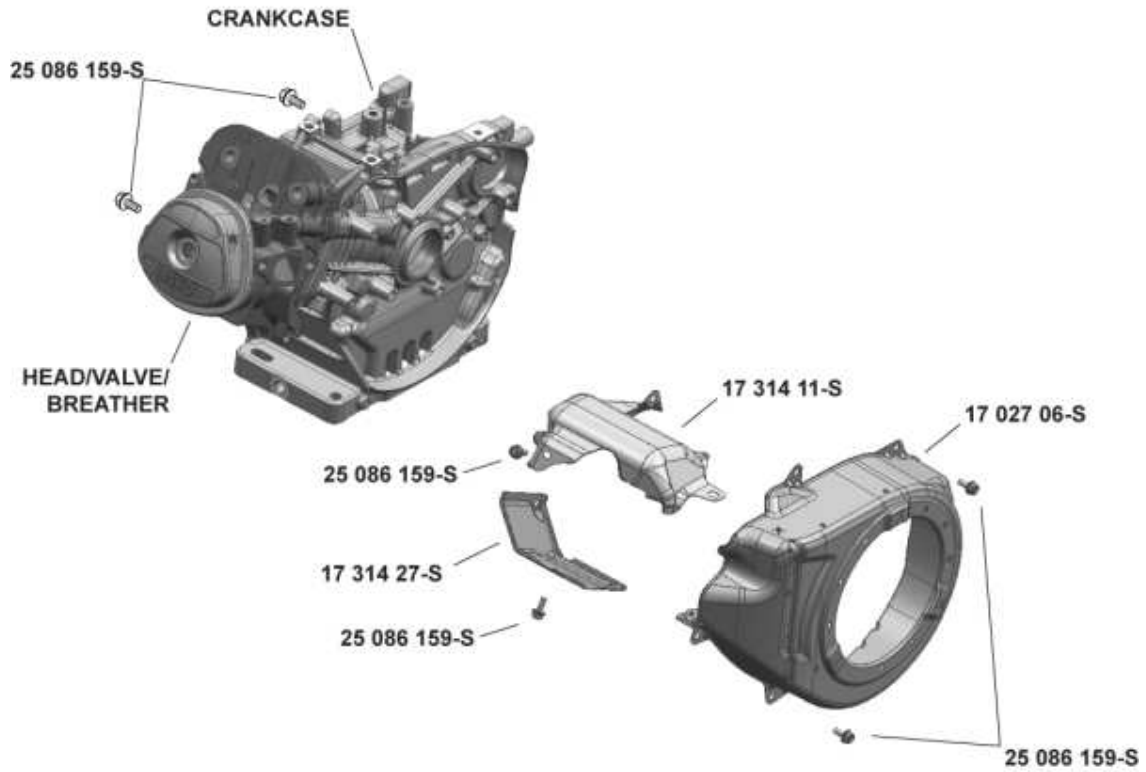
Air Intake/Filtration

AIR INTAKE GROUP



Air Intake/Filtration

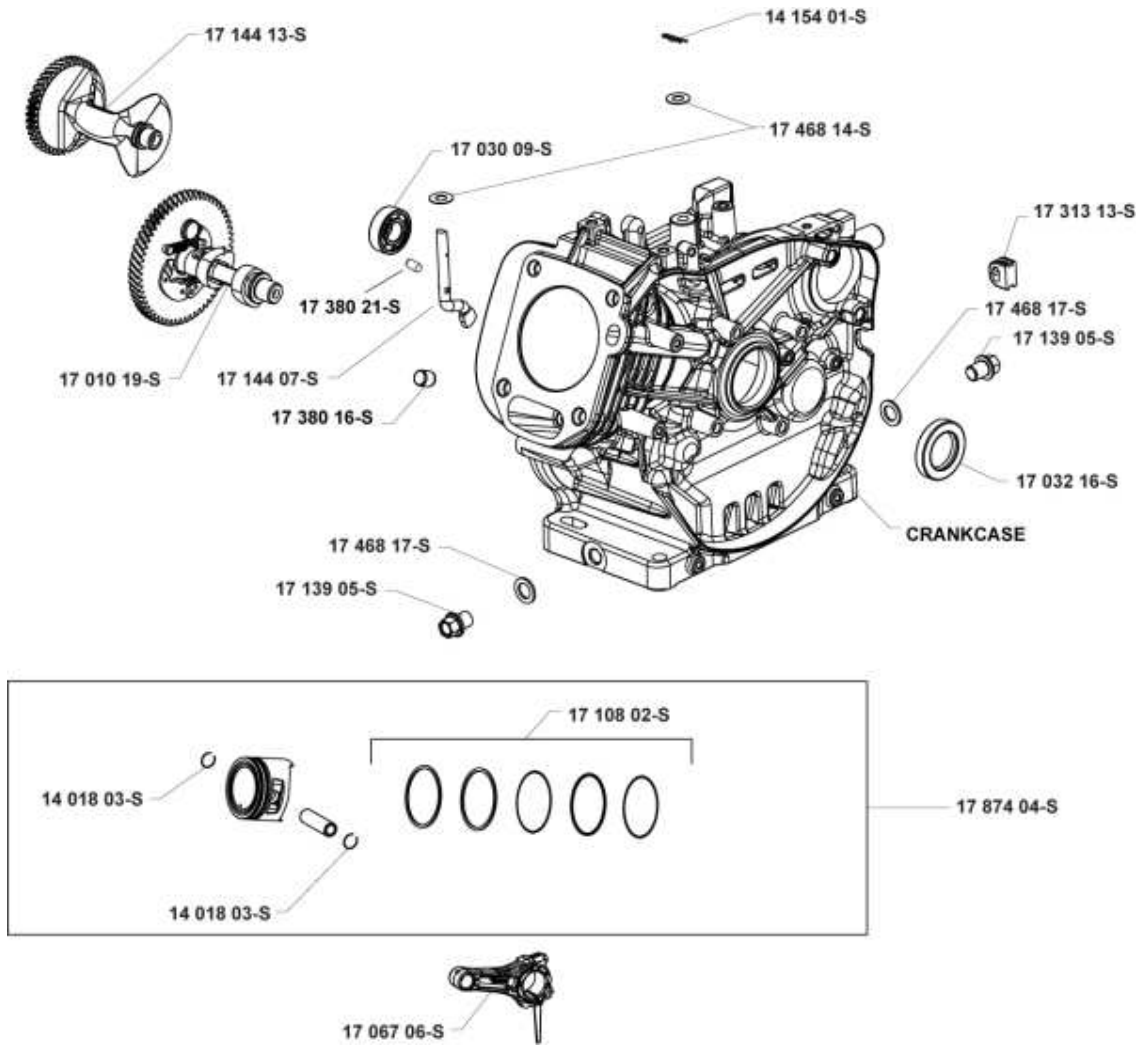
Ref #	Part	Description	Qty
	17 094 33-S	BASE ASSY, AIR CLEANER CYCLONIC	1
	17 083 03-S	ELEMENT, AIR FILTER	1
	25 086 223-S	SCREW, M6 X18	1
	17 096 51-S	A/C COVER BASE-USE 17 096 80-S	1
	14 100 09-S	NUT, HEX FLANGE LOCK (M6)	2
	17 100 43-S	NUT, HEX (M6 THREAD, M8 BODY)	2
	25 086 217-S	SCREW,COVR TO BLWR HOUSING	2
	17 096 67-S	A/C COVER ASSY-USE 17 096 79-S	1
	17 083 15-S	ELEMENT, PRE-CLEANER	1
	17 041 37-S	GASKET, AIR CLEANER	1

**BLOWER HOUSING & BAFFLES**

BlowerHousing&amp;Baffles

Ref #	Part	Description	Qty
	17 027 06-S	HOUSING, BLOWER ASSY-USE 17 027 53-S	1
	17 314 11-S	SHIELD, UPPER HEAT	1
	17 314 27-S	SHIELD, CYL HEAD	1
	25 086 159-S	SCREW, HEX FLANGE (M6) USE 25 086 433-S	6

## Crankcase



## Crankcase

Ref #	Part	Description	Qty
		CRANKCASE	1
	17 030 09-S	BEARING, BALANCE SHAFT	1
	17 468 14-S	WASHER, FLAT	2
	14 154 01-S	CLIP, GOVERNOR SHAFT	2
	17 468 17-S	WASHER, DRAIN PLUG	2
	17 139 05-S	KIT, DRAIN PLUG	2
	17 032 16-S	SEAL, RADIAL SHAFT	1
	17 874 04-S	KIT, PISTON (INCLUDES 14 018 03-S)	1
	14 018 03-S	RETAINER, PISTON PIN	2
	17 067 06-S	ROD, CONNECTING ASSY	1
	17 380 16-S	PIN, DOWEL CYL HEAD	2
	17 144 07-S	SHAFT, GOVERNOR CROSS	1
	17 380 21-S	PIN, DOWEL	2
	17 010 19-S	CAMSHAFT ASSY	1
	17 108 02-S	RING SET	
	17 313 13-S	GROMMET, CRANKCASE	1
	17 144 13-S	SHAFT, BALANCE	1

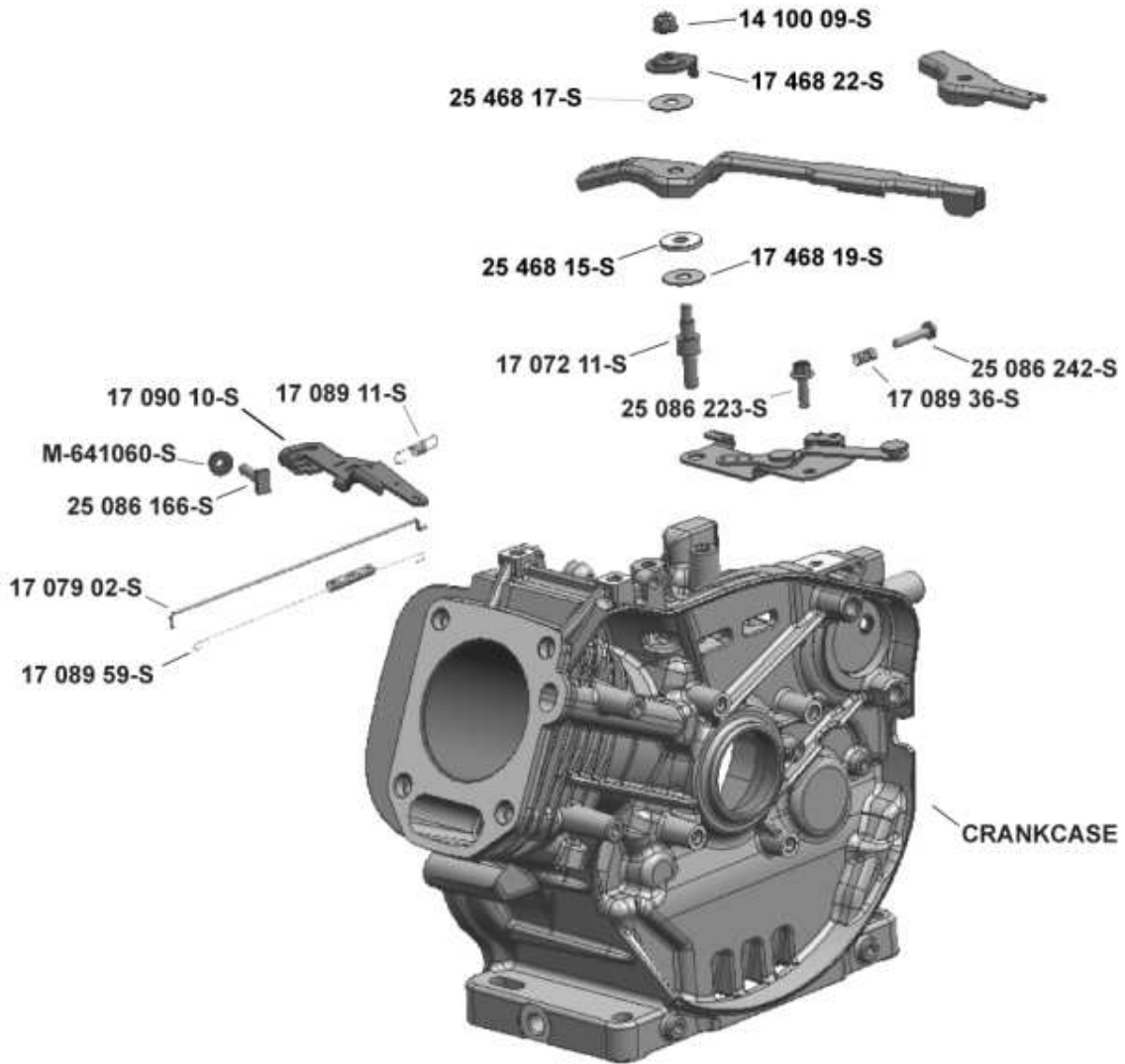
# CRANKSHAFT



Crankshaft

Ref #	Part	Description	Qty
	14 340 01-S	KEY, FLYWHEEL	1
	17 014 74-S	CRANKSHAFT ASSY	1

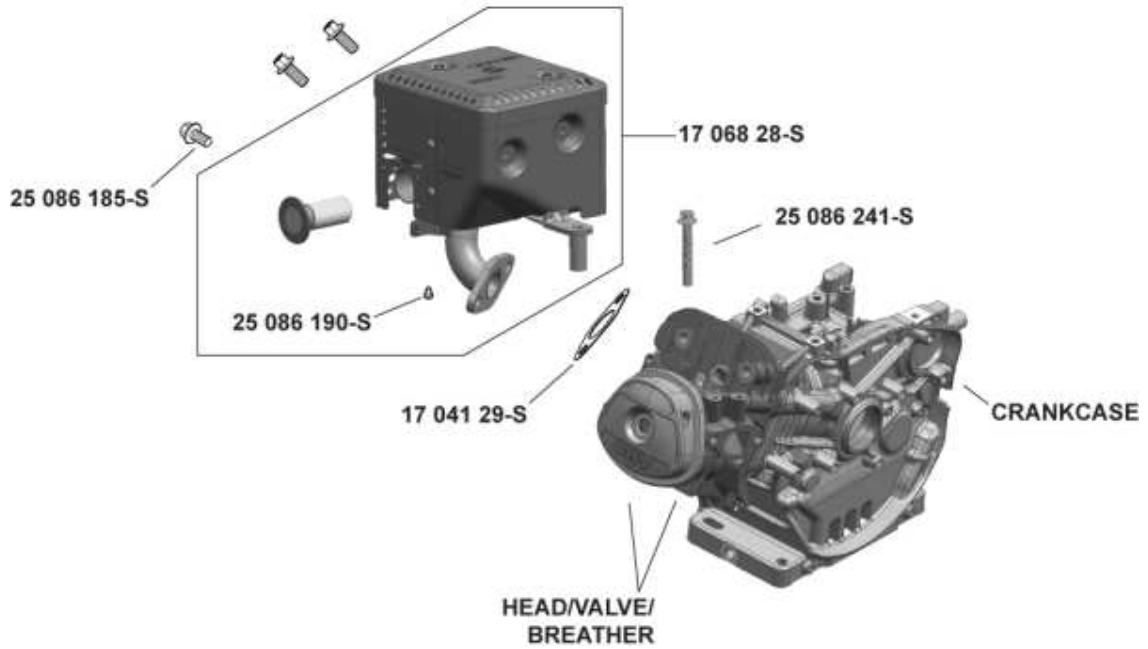
**ENGINE CONTROLS**



Ref #	Part	Description	Qty
	14 100 09-S	NUT, HEX FLANGE LOCK (M6)	1
	17 468 22-S	WASHER, CONTROL LEVER - USE 17 468 34-S	1
	25 468 17-S	WASHER, SPRING	1
	25 086 223-S	SCREW, M6 X18	1
	17 072 11-S	STUD, CONTROL LEVER	1
	25 468 15-S	WASHER, NYLON CONTROL LEVER	1
	17 468 19-S	WASHER, FLAT	1
	25 086 242-S	SCREW, SPEED ADJUSTING	2
	17 089 36-S	SPRING, COMPRESSION	1
	17 089 11-S	SPRING, GOVERNOR	1
	17 090 10-S	KIT, GOVERNOR LEVER	1
	M-641060-S	NUT, FLG M6X1.0	1
	25 086 166-S	SCREW, RECTANGLE HEAD (M6)	2
	17 079 02-S	LINKAGE, GOVERNOR	1
	17 089 59-S	SPRING, LINKAGE	1

Exhaust

**EXHAUST**

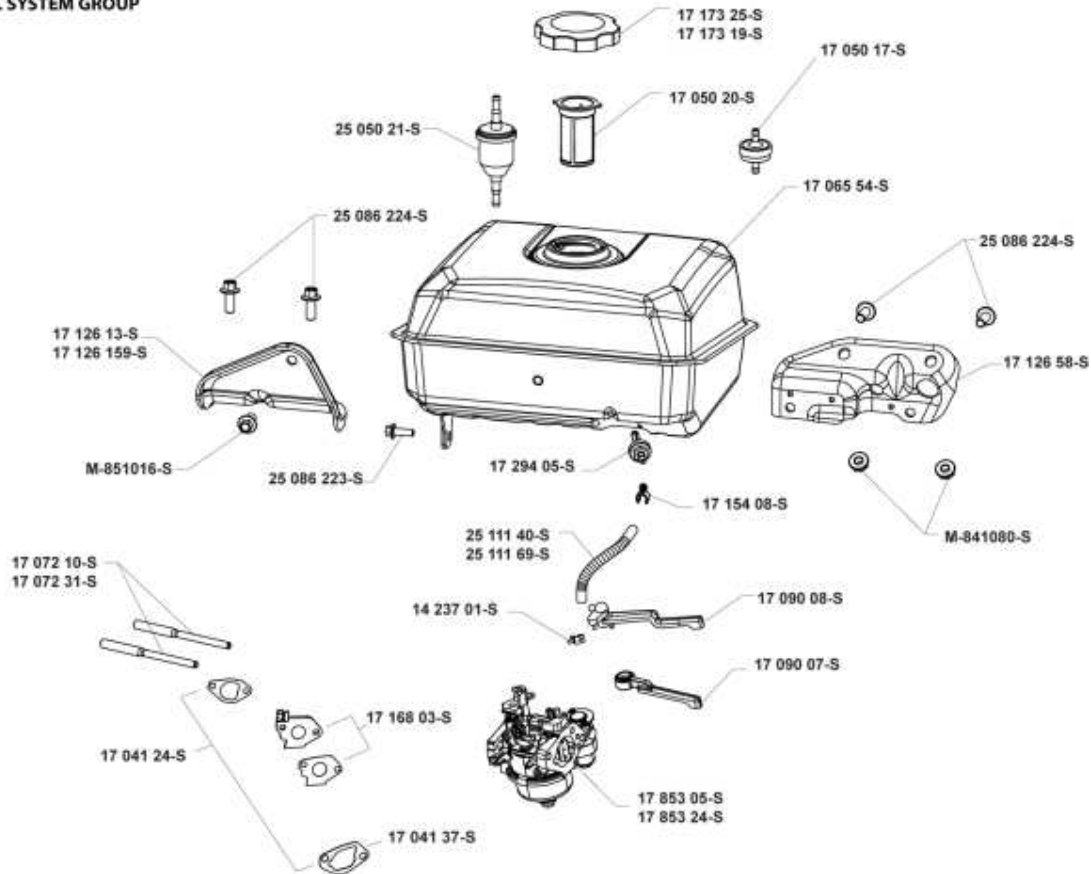


Exhaust

Ref #	Part	Description	Qty
	17 068 28-S	KIT, MUFFLER - (#1706867S) (INCLUDES 17 533 08-S, 25 086 190-S)	1
	17 041 29-S	GASKET, MUFFLER	1
	25 086 190-S	SCREW, SPARK ARRESTOR	1
	25 086 185-S	SCREW, M6 X 8 HEX FLANGE HEAD	1
	25 086 241-S	SCREW, M8 X 55	1

## Fuel System

### FUEL SYSTEM GROUP

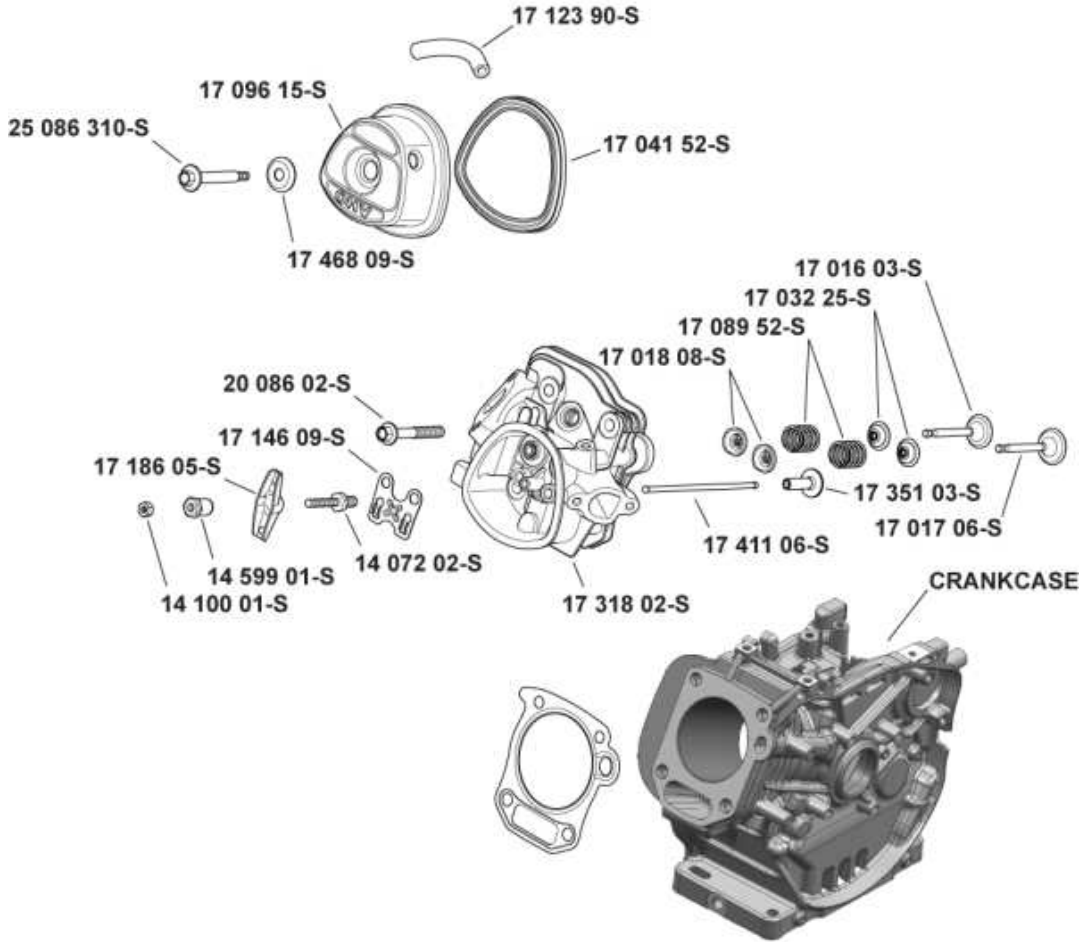


## Fuel System

Ref #	Part	Description	Qty
	17 173 25-S	CAP, FUEL TANK	1
	17 050 20-S	FUEL FILTER TANK	1
	25 086 224-S	SCREW, M8 X 20	4
	17 126 58-S	BRACKET, FUEL SUPPORT ASSY	1
	17 294 05-S	FITTING, FUEL ASSY	1
	17 154 08-S	CLIP, FUEL HOSE	1
	25 111 40-S	LINE, FUEL (10"-CUT TO LENGTH)	1
	17 853 05-S	KIT, CARBURETOR (INCLUDES 17 041 03-S) (FOR SERVICE USE 14 757 01-S)	1
	17 072 10-S	STUD, CARBURETOR	2
	17 126 13-S	BRACKET, FUEL SUPPORT-USE 17 126 159-S	1
	M-851016-S	SCREW, FLG 8X1.25X16	1
	25 086 223-S	SCREW, M6 X18	1
	14 237 01-S	CLAMP, FUEL LINE	2
	M-841080-S	NUT, FLG M8X1.25	2
	17 090 08-S	LEVER, CHOKE	1
	17 090 07-S	LEVER, FUEL SHUTOFF	1
	17 065 54-S	TANK, FUEL ASSY	1
	17 041 24-S	KIT, INTAKE GASKETS	1
	17 168 03-S	KIT, INSULATOR	1
	17 041 37-S	GASKET, AIR CLEANER	1

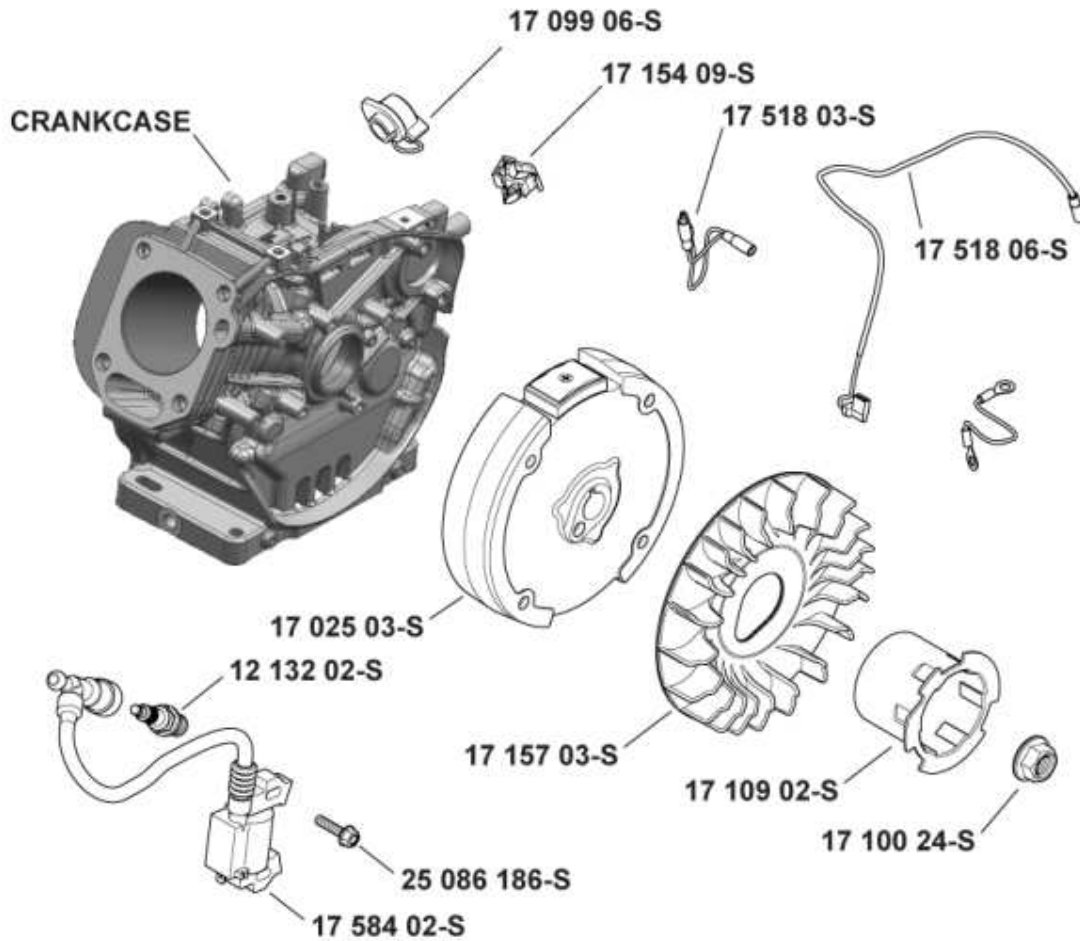


**HEAD/VALVE/BREATHER**



Head/Valve/Breather

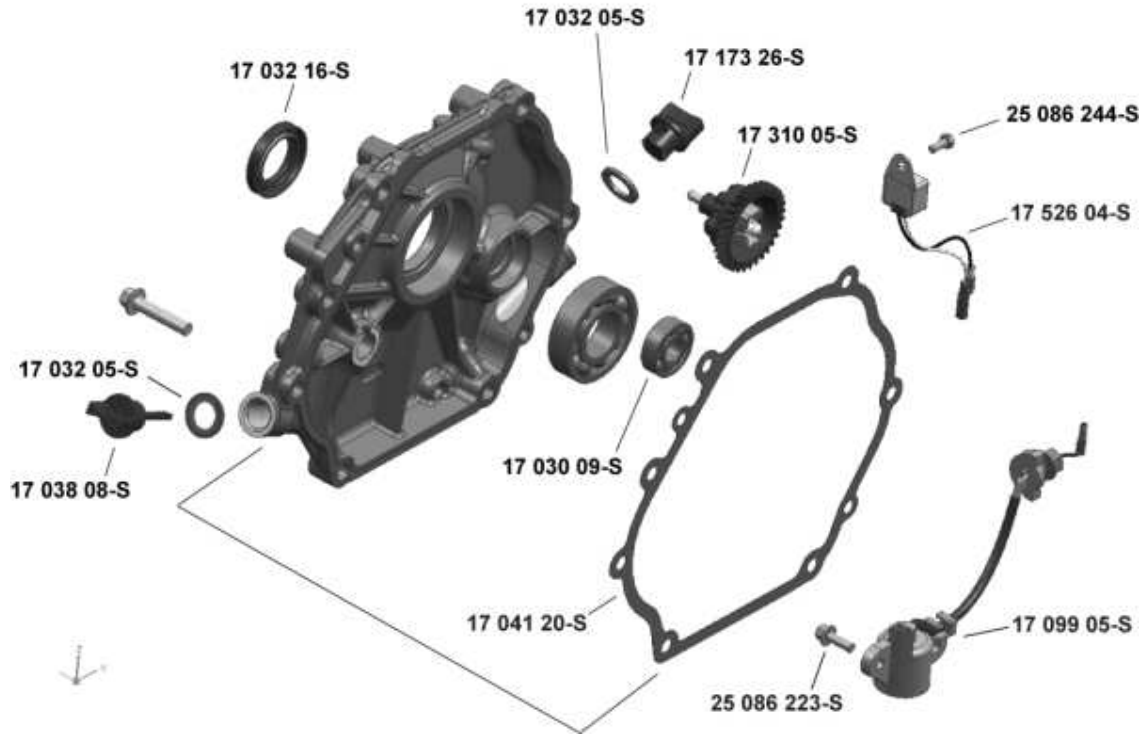
Ref #	Part	Description	Qty
	17 318 02-S	KIT, CYL HEAD (INCLUDES 25 086 240-S)	1
	17 096 15-S	KIT, VALVE COVER ASSY (INCLUDES 17 041 52-S, 17 096 15-S, 17 468 09-S)	1
	17 468 09-S	WASHER, ASSY VALVE COVER	1
	17 123 90-S	TUBE, BREATHER	1
	17 041 52-S	GASKET, VALVE COVER	1
	25 086 310-S	SCREW, VALVE COVER SEAL ASSY	1
	20 086 02-S	SCREW, CYL HEAD (M10 X 80)	4
	17 017 06-S	VALVE, INTAKE	1
	17 016 03-S	VALVE, EXHAUST	1
	17 032 25-S	SEAL, VALVE STEM	2
	17 089 52-S	SPRING, VALVE	2
	17 018 08-S	RETAINER, VALVE SPRING	2
	17 351 03-S	LIFTER, VALVE	2
	17 411 06-S	PUSH ROD	2
	17 146 09-S	PLATE, PUSHROD GUIDE	1
	14 072 02-S	STUD, ROCKER ARM	2
	17 186 05-S	ARM, ROCKER	2
	14 599 01-S	PIVOT, ROCKER ARM	2
	14 100 01-S	NUT, HEX JAM	2
	17 041 24-S	KIT, INTAKE GASKETS NOT ILLUSTRATED (INCLUDES AIR CLEANER BASE GASKET, INSULATOR TO CYLINDER HEAD GASKET, CARBURETOR TO INSULATOR GASKET)	2
	17 168 03-S	KIT, INSULATOR NOT ILLUSTRATED	1
	17 072 10-S	STUD, CARBURETOR NOT ILLUSTRATED	2
		KIT HEAD GASKET	

**IGNITION/ELECTRICAL**

Ignition/Electrical

Ref #	Part	Description	Qty
	17 099 06-S	SWITCH, ON/OFF - USE 17 099 24-S	1
	17 154 09-S	CLIP, WIRE HARNESS	1
	17 518 03-S	LEAD, OPTIONAL EQUIPMENT	1
	17 518 06-S	LEAD, GROUND TO KILL	1
	17 025 03-S	FLYWHEEL ASSY, CAST IRON (RECOIL)	1
	12 132 02-S	SPARK PLUG (STD)	1
	17 157 03-S	FAN, FLYWHEEL	1
	17 109 02-S	CUP, STARTER DRIVE - USE 17 109 07-S	1
	17 100 24-S	NUT, FLYWHEEL	1
	25 086 186-S	SCREW, M6 X 25	2
	17 584 02-S	MODULE, SPARK PLUG ASSY	1

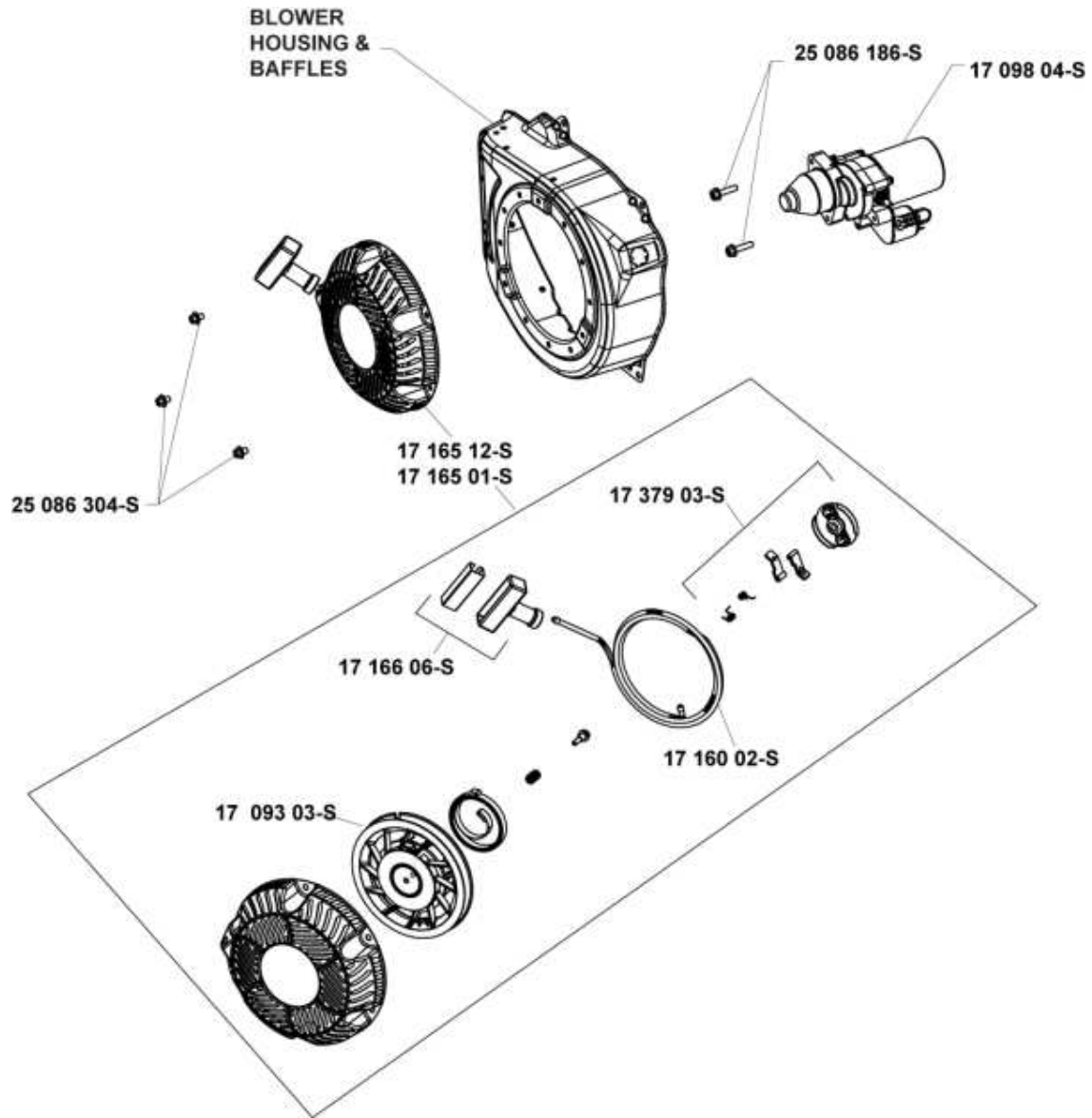
**OIL PAN/LUBRICATION**



Oil Pan/Lubrication

Ref #	Part	Description	Qty
	17 032 05-S	OIL SEAL - USE 17 038 08-S	2
	17 173 26-S	CAP ASSY, OIL FILL	1
	17 310 05-S	GOVERNOR, ASSY	
	25 086 244-S	SCREW, HEX/PHILLIPS M5	1
	17 526 04-S	CONTROL, OIL ALERT UNIT	1
	17 099 05-S	SWITCH, OIL SENSOR ASSY	1
	25 086 223-S	SCREW, M6 X18	1
	17 030 09-S	BEARING, BALANCE SHAFT	1
	17 041 20-S	GASKET, CLOSURE PLATE	1
	17 038 08-S	DIPSTICK ASSY	1
	17 032 16-S	SEAL, RADIAL SHAFT	1
	17 009 37-S	KIT, CLOSURE PLATE ASSY NOT ILLUSTRATED	1

StartingSystem



StartingSystem

Ref #	Part	Description	Qty
	17 165 01-S	RETRACTABLE STARTER ASSY - USE 17 165 12-S	1
	25 086 304-S	SCREW, M6 X 8 HEX FLANGE HEAD	3
	17 379 03-S	KIT, PAWL REPAIR	1
	17 160 02-S	KIT, ROPE	1
	17 166 06-S	KIT, HANDLE	1
	17 093 03-S	PULLEY, RECOIL	1